

The Pie Card

Volume 59, June 2025, Number 6

Mid Central Region, National Model Railroad Association



FROM THE SUPERINTENDENT'S DESK

By Ron Ellison



My late father was fond of the expression, *We came out of that smelling like a rose!* And that's what happened last night at the MCR Convention banquet as I write this Superintendent's article the next day on May 18, 2025.

Each year a couple of months before the MCR Convention, each Division is asked to make a nomination for the Director's Award and for the Wenderfer Award. The Director's Award is presented in recognition of exemplary and outstanding service to the Mid Central Region and the hobby of model railroading. And the Wenderfer Award is given to an individual who by their actions, involvement with Division activities, and overall extraordinary volunteer service has promoted the hobby of model railroading and promotion of the NMRA and is sponsored by Cincinnati Division 7. Both awards are voted on by the MCR Board of Directors.

As Fred and Barbara left for the Convention, I asked them to pick up any intel on the awards. Nothing from Fred and Barbara Thursday or Friday. I messaged Fred Saturday at 9 AM. Response – Can't get any information until the banquet tonight. At around 6 PM I'm at my computer editing *The Pie Card* Division 8 meeting report from last Saturday to send to Bob Dawson. My message app pinged – Wenderfer, Mike Berry. This was great news for Mike and Division 8.

About 30 minutes later another ping from Fred – Russ Weis, Director. Unbelievable – our guys captured both awards. And there's no question that Mike and Russ are very deserving of this recognition by their peers. When we informed each, they expressed surprise. These are two humble guys who do the work because it needs to be done – not for the recognition. But Division 8 along with Mike and Russ are proud and humbled by the recognition of our two members.

Mike attended the convention but not the banquet. The Wenderfer Award will be presented to him at an upcoming Division 8 meeting.

And Russ was home working in the yard before the next round of storms when we caught up with him. The Director's Award will be presented to Russ at the June 21st Division 8 Membership Meeting.

But that's not all – there's more. Another ping from Fred with a photo of a contest award, *People's Choice Award Favorite Arts & Crafts* held of course by a smiling Barbara Soward.

(continued to Page to page 6)



TIME TABLE

Jun 21, Sat 2PM, Div 8 Hybrid meeting, Jeffersontown Library and Zoom.

Jun 28, NMRAX, Virtual YouTube & Facebook.

Jul 14-19, NMRA National Convention, Novi, MI.

Jul 26, Sat. Div 8 Picnic, Bluegrass Railroad Museum, Versailles, KY.

Aug 2, NMRAX, Virtual YouTube & Facebook.

Aug 16, Sat 2PM, Div 8 Hybrid meeting, Jeffersontown Library and Zoom.

Aug 30, NMRAX, Virtual YouTube & Facebook.

Sep 3-6, National Narrow Gauge Convention, Collinsville, IL.

Sep 20, Sat 2PM, Div 8 Hybrid meeting, Jeffersontown Library and Zoom.

Sep 27, NMRAX, Virtual YouTube & Facebook.

Oct 11-12 Division 7 Cincinnati Train & Trade Show.

Oct 18, Sat 2PM, Div 8 Hybrid meeting, Jeffersontown Library and Zoom.

Oct 25, NMRAX, Virtual YouTube & Facebook.

JUNE 2025 CHARLIE KEELING HYBRID MODEL CONTEST*By Barry Christensen, Contest Chairman*

June	Open loads
July	NO CONTEST
August	MOW equipment
September	Photos (model) and photos (prototype)
October	Steam locomotives
November	Displays (no size limit)
December	Highway vehicles
January	Freight cars
February	Non-steam motive power
March	Structures
April	Passenger cars
May	Cabooses

For May, Division 8's Charlie Keeling Hybrid Model Contest category was cabooses. There were four entries, modeling unique and distinct types of cabooses.

Honorable mention goes to Jody McNutt for his SCL/L&N wide view caboose. Third place goes to Bob Frankrone for his abandoned and forgotten caboose. Second place goes to Ed Brennan for his combine-work caboose. First place goes to Bob Kuchler for his Great Northern caboose. Congratulations to our modelers for their creative caboose modeling.

The revised point totals are now: Bob Kuchler with 22, Ed Brennan and Bob Frankrone with 18, Steve Lasher with 12, Randall Griggs with 11, Russ Weis with 8, Bruce DeMaeyer with 7, Eric Waggoner with 6, Rick Maloney and Jody McNutt with 5 each, Chris Broughton and Al Goodman with 4 each, Paul Downs with 3, John Helton and Fred Soward with 2 each, and George Ronn, Barbara Soward and Cecil Stewart with 1 each.

The June Contest is **OPEN LOADS**

We will send out a reminder but below are some of the Contest timeline dates for June:

- June 7th - First day to submit entries
- June 14th - Last day to submit entries
- June 19th - Members will receive the Contest Ballot
- June 19th & 20th - Voting in the Contest Ballot ends @ 10:00 PM on the 20th
- June 21st - Winners announced at the meeting - 1st, 2nd and 3rd
- August 2nd - First day to submit August contest entries **MOW EQUIPMENT**

If you need more information, go here - <http://div8-mcr-nmra.org/site/html/contest.html>.

(continued to column 2)

**MAY MEETING INFORMATION**

The June Division 8 meeting is **2 PM Saturday, June 21, 2025** at the Jeffersontown Library, 10635 Watterson Trail, Louisville, KY 40299. To maintain the security of the meeting, the Zoom connection information will be sent directly to members by email about a week prior to the meeting and will not be published online. Bruce DeMaeyer is presenting the program, "Building the Whitefish, MT, Station Using New Techniques in N Scale!"

CONTEST TIMELINES (continued from column 1)

To enter the June Contest, use the **Contest Entry Form** on the Division 8 website

here → [Contest](#) and just follow the simple instructions included in the form. Entering the Contest has never been easier.

Contest dates will also be listed in the Groups.io Calendar. And as always if you have questions, comments, or need help, email division8.mcr.nmra@gmail.com

We will publish the Contest timeline dates each month in **The Pie Card**.

MEMBER WELFARE*By Mike Berry Member Welfare Chairman*

We had one member hospitalized this month - Rick Wehr. Please let us know if you hear of anyone else with an issue. The Member Welfare Fund donations for this fiscal year: \$200 from the Charlie Keeling family, \$100 anonymous, and \$40 from Ed Brennan.

MEMBERSHIP REPORT*By Stan White Member Relations Chairman*

As of the last report received from the Mid Central Region, we have 145 active members.

We had three renewals (Bruce Sanders, Jacob Schiess, Chris Wiles) Zero new members. Nine expired members (Jim Hall, Stephen Summers, John Helton, Lisa Helton, Steve Oswald, Gerald Hensel, Ed Cowan & Family, KRM)

MAY CHARLIE KEELING MODEL CONTEST

Photos by the Modelers



FIRST PLACE

Left:

Bob Kuchler's N Scale "Great Northern Caboose."

Bob built this from an N scale 3D printed kit. He painted and assembled it, added Microscale decals, and Micro-Trains trucks and couplers. He added window glass and weathered it with Pan Pastels.

SECOND PLACE

Right:

Ed Brennan's HO scale "Combine - Work Caboose."

Ed started with an Ambroid Combine-Work Caboose kit. He modified it to include underbody and interior details, and added items including a workman. Other details added included trucks and some from his spare parts stash.



THIRD PLACE

Left:

Bob Frankrone's HO "Abandoned and forgotten"

Bob severely weathered an Athearn "blue-box" caboose using a combination of oil and acrylic paints, weathering powders, and graffiti decals.



HONORABLE MENTION

Right:

Jody McNutt's HO "SCL/L&N Wide View Caboose"

He modified an Athearn / John Henry Lines caboose. He added interior 3D printed details, lighting and a figure.



MAY MEETING PHOTOS

Rather than meeting at the library as usual, the May meeting was held in La Grange, Kentucky as part of La Grange Rail Fest 175 celebrating 175 years of trains through Main Street in La Grange.



Above: A highlight of the meeting was a personal congratulations to Mark Hedge via Zoom by NMRA President Gordy Robinson MMR® upon Mark being an NMRA member for fifty years.
Screen Shot from May meeting video



Left:
Earlier in the morning before the meeting, one of the "Stars," a CSX train, makes it way slowly down Main Street.
Photo by Fred Soward MMR®

Right:

"Conductor" Fred taking a close up.
Photo by Barbara Soward



(Continued on page 5)

MAY MEETING PHOTOS (continued from page 4)

Photos by Barbara Soward unless noted otherwise



Left and below:

The several layouts and dealers were set up adjacent to the meeting space. *Photos by Bob Dawson*



Left:

Contest Chairman Barry Christensen (left) presented Bob Kuchler MMR® with his May Contest first place certificate.



Two presentations were made following the business meeting.

Above: Russ Weis presented "Model Railroading 101", and introduction to Model Railroading.

Left: Bob Dawson presented "Other Rails to La Grange-The Louisville & Interurban Railroad."



FROM THE SUPERINTENDENT'S DESK (continued from page 1)

And then another ping – *First Place Arts & Crafts Needlework*, Barbara Soward. But wait, there's still more. *Best of Show Arts & Crafts*, Barbara Soward. Mrs. Barbara is a winner in many more ways! We hope Barbara will share her awards and work at the June Division 8 Membership Meeting.

If you didn't know, Barbara Soward was elected Treasurer of the MCR and assumes her office after the close of the Convention.

And Bruce DeMaeyer was elected as Secretary of the MCR. Bruce of course has been serving as MCR Secretary after he volunteered to take over as Secretary when Fred was elected the Central District Director and could not hold both positions simultaneously.

The Spring MCR Board of Directors meeting took place Friday evening during the Convention. We are asked to submit a written report outlining what we've been up to since the last meeting in January 2025. If you wish, you can read the report here [2025.05.16 Division 8 MCR BoD Report](#)

All in all, a very good night for Division 8.

MAY MEETING REPORT

By Rick Maloney MMR® Division 8 Clerk

The May Division 8 Membership Meeting was held in conjunction with the LaGrange Rail Fest 175 celebration in La Grange, KY. The public was invited to join us starting at 9:00 AM at the La Grange Community Center where model railroad displays, vendors, and a Division 8 information table had been set up.

At 2:00 PM we moved to an adjacent room for the membership meeting. Ron Ellison called the meeting to order and welcomed members present in person and those attending on Zoom. He welcomed two new members: Chris Wilkerson, and Mitch Shirrell. Ron recognized member Joe Martin who can't often attend because of his job on Saturday's at Scale Reproductions Hobby Shop. We were also pleased to have NMRA President Gordy Robinson MMR® join us on Zoom to congratulate Mark Hedge for receiving his 50-year NMRA Membership Certificate. Mark proudly accepted the award on Zoom.

The May meeting was also the Division 8 Annual Meeting as required by our Bylaws. Ron asked, and Stan White made a motion to accept the minutes of last month's meeting and Bruce DeMaeyer seconded it, so moved. Member Welfare Chairman Mike Berry reported that Rick Wehr had been hospitalized. We wish him a speedy recovery. Ed Brennan MMR®, on Zoom, informed us that he continues to recover from his recent eye surgeries. Barry Christensen presented Bob Kuchler MMR® a certificate for First Place in the May Charlie Keeling Model Contest. Russ Weis reported that next month's meeting presenter will be Bruce DeMaeyer "Building the Whitefish, MT, Station Using New Techniques in N Scale." Russ also made an appeal for volunteers for home layout tours. With that he invited everyone to enjoy the layouts and vendors after this month's presentations.

Ron reminded us of the upcoming summer picnic in July and the Train Show & Sale in November. Following the business meeting, Russ Weis presented "Introduction to Model Railroading." Bob Dawson was up next. He had a hard act to follow, but as always, he was up to the task. His presentation was "Other Rails to La Grange, The Louisville & Interurban Railroad." After the presentations the meeting was adjourned at 3:08 PM.

**APRIL CONTEST AWARD**

Left:

Mike Berry presented Steve Lasher (right) with the certificate for his first place entry in the April Charlie Keeling Model Contest

The photo was taken at the K & I Model Railroad Club's new "World Headquarters" on Clarksville, IN.

Photo submitted by Ron Ellison

DARCY ELLIOTT APPOINTED AS A DIVISION 8 TRUSTEE

Tom Guentner submitted his resignation as a Trustee for Division 8 MCR NMRA. In accordance with Article II, Section 2 of the Division 8 Bylaws, the Board of Directors appointed Darcy Elliott at the April 2025 Board of Directors meeting to fill the remainder of Tom Guentner's term. Tom has been named Director Emeritus in recognition of his service to the Division.

FROM THE ASSISTANT SUPERINTENDENT

By Fred Soward MMR®, Division 8 Assistant Superintendent

What happened to May? So much happening, I hardly knew it was here. And, unfortunately, not much was happening in our basement this past month.

- Tom Guentner, Bob Dawson, Eric Waggoner, and I have <finally> developed a sequence of trains to run during operating sessions on Tom's layout. I've been saying it for quite awhile – we'll start running operating sessions in June. <woo hoo>
- Barbara & I, along with several other Division 8 members attended the 2025 Mid Central Region convention in Dublin (Columbus), Ohio. Ron wrote a bit about that and there are photos later in this edition of The Pie Card.
- Barbara & I were in Florida in early May, but the only model railroading I did was to visit a friend for a layout tour and breakfast as schedules just didn't work out for anything else. I did, however, appear on two different Virtual Railfan cameras!
- A big box of homabed arrived at our home this month. I verified the delivered contents agreed with what was ordered and then put the box away. It'll likely be a few months before we are able to lay down any of that homabed.

Congratulations again to Mike Berry, Russ Weis, and Ms Barbara for their work being recognized within the Mid Central Region.

A MODEL RAILROADER'S STORY

By David E Mertz, Sr, photos by Bob Dawson



Above: David and his trains.

I am an avid train modeler. I belong to the K and I Model Railroad Club, Southern Indiana Model Railroad Club, and Division 8 MCR NMRA. My love for model trains started when I was very young. Growing up, my brother would set up a 4'x8' layout at Christmas in our bedroom and he would run his O gauge Marx steamer and his S gauge American Flyer Silver set passenger train. He scratch built oil storage tanks out of large vegetable cans. He painted them and even contacted one of the local oil companies to get decals for the tanks. He had an access hole in the middle to access areas that he couldn't reach from the edges. When he didn't need access, our mom gave him a 9"x12" cake pan that he filled with water to create a pond. I loved watching the trains run. At the end of Christmas, he packed it up and stored the board until next Christmas.

While we were growing up, our aunt worked for the L & N Railroad. During the summer, we would go to the L & N country club on South Park Road and watch the trains go by, freight trains and an occasional passenger train. I would even go down and put coins on the tracks so the train would roll over them and flatten them. I don't recommend doing that these days.

As life does, my brother got married and moved out and the trains never came out again. Eventually I got married and moved out and had two sons. Life went on raising the family and trying to keep my head above water which left no money for train materials. My interest in model railroading never really died. Several years ago, I started to go to the libraries that had model train layouts and watched and asked questions of the people that were running the trains.

Then, I went to one of the Division 8 train shows and my interest really peaked. I talked to somebody there and got information of how to join the K & I model club. Unfortunately, that is when my wife took a turn for the worse and several months later, she passed away. That was four years ago. I needed something to fill my emptiness and model trains
(continued on page 8)

A MODEL RAILROADER'S STORY *(continued from page 7)*

started to fill that void. In the meantime, my brother was going to sell his American Flyer set and I said that I would take it. That really piqued my interest and desire for model railroading.

So, I joined the K and I model club and started purchasing N scale track, locomotives, rolling stock and model building kits. K & I Club member Doc Shane was my mentor, and I started to ask Ed Brennan questions and basically made a pest of myself. Shortly after that, I learned that one of the K & I members, John Stoltz, passed away and his widow wanted to donate his layout to the club. Ed, knowing that I was getting started, contacted me about possibly purchasing the layout and I jumped on the chance. It was a u-shaped layout with track, a turntable, tortoise switches, but no buildings. Ed, Stan White, and Mike Berry brought it from the K & I club house and set it up in my newly emptied garage. The layout had to be cut into pieces to get it out of John's house resulting in several sections of track that had to be replaced. I tried but had no success. So, Darcy Elliott and Myron Coldiron came over and repaired the sections of track that I couldn't repair.

Now that the track was fixed, I had to figure out how to make the layout functional. John used EasyDCC on his layout. I couldn't find anyone who knew anything about it, so I went to Roundhouse and purchased the NCE dcc system. Unfortunately, I did not know how to control the sixteen tortoise switches using my dcc system. So, I disconnected all the tortoise switches from the dcc system and connected each switch to a DPDT switch. I have 8 switches on one side and 8 switches on the other side. I have even hooked up a few dwarf signals to the switches. Now that the switches work, I have moved on to other items.

I had been collecting rolling stock kits, so I started to assemble them. I was advised to replace the plastic wheelsets with metal wheelsets and replace the horn hook couplers with Kadee couplers. So, as I assemble the kits, that is exactly what I do. I have assembled close to 40 to 50 pieces of rolling stock, including several cabooses and tank cars. I have also collected many building kits and began assembling them and I am starting to set the buildings on the layout. I plan on lighting several of the buildings to give it that realistic look.

I started collecting locomotives that were dcc ready and wanted to know how to make them dcc enabled. I started asking Darcy Elliott about how to do this. He took me under his wing and started to let me know how to do it. So, I took a dcc ready locomotive and purchased the correct pin decoder and installed it and to my surprise, it actually worked. I even took a dc locomotive that I purchased from the Bradford Collection and saw that it had a computer chip in it. So, I took it apart, installed a 21-pin decoder, repaired the pins that I had bent when I tried to install the decoder and then installed a speaker and now, I have a locomotive that was initially a dc locomotive and converted it to dcc with sound. I had two switch engines that had trouble going over a turnout because of their short wheelbase. So, with Darcy's guidance and skill, he and I, namely Darcy, replaced the decoder and installed a decoder that had built-in KeepAlives and now they go over that turnout with no issues. Thank you, Darcy.



Above: The Bradford Collection "Coca-Cola" locomotive David converted to DCC.

In the meantime, I still have my N scale items and now I have made a layout on my 4'x8' benchwork, attached the track and have wired it for dcc operation using NCE power cab and I hope to soon start working on that. I have replaced some couplers and wheelsets on the rolling stock, but that is not as easy as the HO scale because of the size, but I will not give up.

Meanwhile, I have become very active in the K & I club. I have become the person in charge of the K & I test track at the Division 8 Train Show and Sale for the past four shows, and helped the club make the move from the old World Headquarters at 4th and Winkler to the new location at Clarksville Station in Clarksville, IN. I also helped with getting the travelling layout up and running and did some work on the main layout. I was picked to be one of the four run crew chiefs that will operate once the new headquarters is open to the public. I am honored that the higher ups of the club thought I was up to doing that. *(continued on page 9)*

A MODEL RAILROADER'S STORY *(continued from page 9)*

My only regret is that now I am 69 years old, I hope that I am as capable as many of the older club members in doing what they do, like Stan White's incredible model making and Mike Berry's ability to rewire the layouts taken apart for the move.

I would really like to express my appreciation to Ed Brennan and Darcy Elliott for all their assistance in the short time I have been involved in model railroading. I would not be where I am today without their support and assistance. There have been many members of the K & I club that have been of great assistance to me: Stan White, Mike Berry, John Helton, Rudy Licandro, Kent Westphal, Wesley Gardner, Ron Ellison, and Greg Gephart to name a few. Also, several members of the Southern Indiana Railroad Club, namely Darcy Elliott, and Myron Coldiron have been a big help.

Some may say that I am not a true modeler because I don't model a certain era or a certain railroad company, and that I run 1980's locomotives with 1960's rolling stock. I enjoy the hobby and as several people have told me, "It is your railroad, you run it the way that makes you happy" and I feel like I am doing that very thing. I really enjoy the hobby, and I hope to be in it for a very long time.

CIRROPS 2025

Photos and captions by Fred Soward MMR®



Left:

The Division 8 group at Tom Cain's MMR® HO scale Eastern Illinois Santa Fe during CIRROPS 2025 (Central Indiana Rail Road OPERATIONs). CIRROPS is a three-day event operating on model railroads in and around Indianapolis in April of odd-numbered years.

Left to Right: Fred Soward MMR®, Ron Ellison, Bob Kuchler MMR®, Rob Toler.

Right:

Division 8 members Ron Ellison and Rob Toler running trains on Tom Cain's MMR® HO scale Eastern Illinois Santa Fe.

(continued on page 10)





Left:

Bob Kuchler MMR® receiving instructions about yard movements on Brad Rotert's HO scale B&O Decatur Sub.

Right:
Fred Soward MMR® keeping close watch on his train as it moves across Brad Rotert's HO scale B&O Decatur Sub.



Left:

Rob Toler working one of the many industries on Brad Rotert's HO scale B&O Decatur Sub.



BUCKEYE EXPRESS 2025

By Fred Soward MMR®, photos by Fred unless noted otherwise.

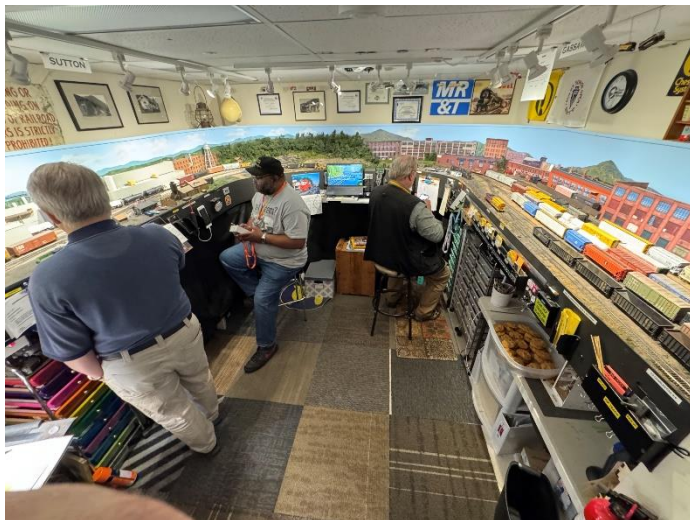
Several Division 8 Members attended this year's Mid Central Region Convention, The Buckeye Express 2025, May 15th through May 18th.



Left: (left to right) Bruce DeMaeyer, Bob Frankrone, Larry Smith MMR® (Division 10), Eric Waggoner, and Cecil Stewart enjoy breakfast together as they plan the day's activities during the 2025 Mid Central Region Convention.



Right: Division 8 member Fred Soward MMR® is closely watching the end of the train backing into a yard track being run by Division 8 member Eric Waggoner on Dave Matheny's HO scale Sutton Branch layout during the convention.



Left: A wide angle view of Dave Matheny's HO scale Sutton Branch layout. (Left to Right) MCR President Jerry Doyle, Division 9 member Tony Parrish, Division 8 member Eric Waggoner. Below: Eric Waggoner using the ProtoThrottle to run his train on Dave Matheny's layout.



It's not all trains during a convention. (Left to Right) Outgoing Mid Central Region Treasurer John Shields and incoming Treasurer Barbara Soward took a few minutes to officially hand over the MCR bank account at a local branch office during the 2025 Mid Central Region Convention.

Photo by Jerry Doyle

(continued on page 12)



Left: Division 8 member Barbara Soward during a visit to Dick Argo's C&O - Columbus layout. That's the Division 9 touring team behind her, with (Left to Right) Jerry Doyle, Don Cippola, Tony Parrish, Sam DeLauter, and David Oliverio.



Above right: One of the more interesting pieces of rolling stock found on Howdy Lamprecht's MMR layout during the 2025 Mid Central Region Convention. Howdy's entire layout is a study in caricatures and tongue-in-cheek modeling.



Left: Barbara Soward receiving her "People's Choice" award for her "Bestie Bag" she entered in the 2025 Mid Central Region Convention contest.



Above: Barbara Soward receiving her "First Place" award for her "Baby Blue Baby Afghan" she entered in the 2025 Mid Central Region Convention contest.



Left: Fred Soward MMR® receiving his Certificate of Appreciation for his service as the Mid Central Region Secretary (May 2021 to August 2023)
Photo by Barbara Soward

FRED IN FLORIDA

In early May, Fred made a trip to Florida. While the purpose was not rail/model railroad related, he did manage to squeeze in one layout stop and a prototype stop.



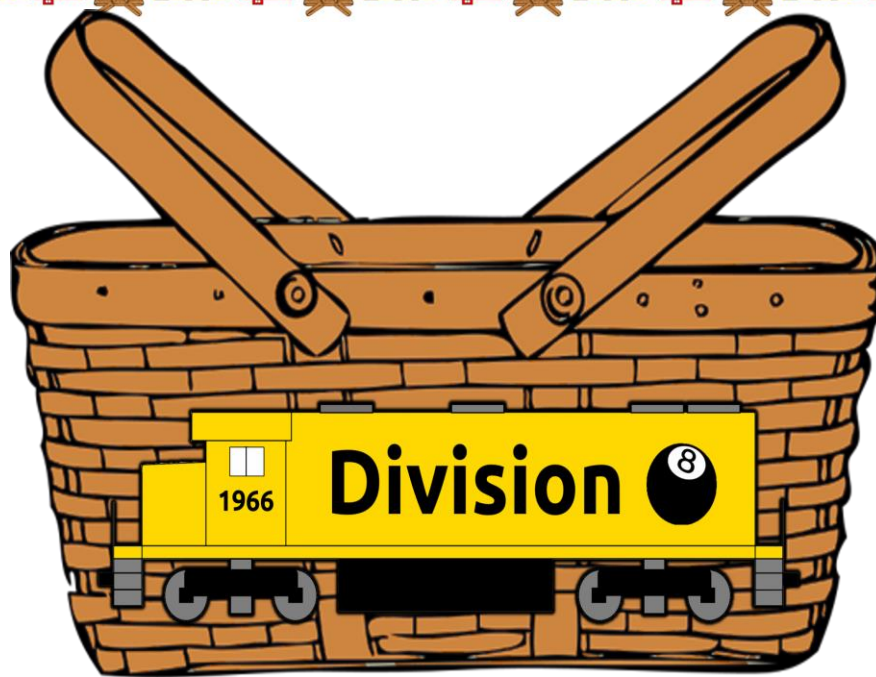
Left and Below: Fred Soward MMR visiting Chip Pecere's N scale layout in Vero Beach, FL.

Photos by Barbara Soward

Below:

Do YOU know where Fred Soward MMR was located when this Virtual Railfan screenshot was taken? HINT - Somewhere between L'ville, KY, and Vero Beach, FL.





DIVISION 8 PICNIC

SATURDAY JULY 26, 2025

CATERED LUNCH & TRAIN RIDE

BLUEGRASS RAILWAY & MUSEUM

Versailles, KY 40383

[MAP LINK to LUNCH VENUE](#)

ANNUAL AWARDS FOR THE MODEL CONTEST WILL BE PRESENTED
AND CATERED LUNCH WILL BE PROVIDED
PLUS ROUNDTRIP TRAIN RIDE

You'll have some free time to wander and see the museum

Tickets are \$10.00 and must be purchased in Advance

[Click to Buy](#)



2025 NATIONAL CONVENTION

Experience Model Railroad Reimagined: A Convention Like No Other

The 2025 NMRA Convention breaks new ground with an innovative approach that puts you first. Get maximum value at minimum cost - featuring 90+ expert clinics, 60 spectacular layouts spanning up to 3,000 sq. ft., and exclusive prototype tours including Ford plant access and Detroit River industrial cruises.

Enjoy unlimited layout visits and operating sessions, free parking, flexible scheduling, and convenient suburban location - all at just 40% of traditional convention costs. Whether you're an NMRA member or newcomer to the hobby, join us Monday through Saturday for an accessible, value-packed celebration of model railroading.

Register now to secure your spot at this groundbreaking event, where tradition meets innovation.



**Modeling With
The Masters®**



**Layout Tours
of all scales**



**Prototype
Tours**



**Over 50 great
clinics**

\$125 Early Rate

BOOK YOUR TICKET NOW
WWW.NMRA2025.COM





NATIONAL MODEL RAILROAD ASSOCIATION PRESENTS:



2025 NATIONAL TRAIN SHOW

JULY 19-20, 2025
10:00 AM - 04:00 PM

About Our Event!

Thank you for your interest in exhibiting at the 2025 National Train Show® in Novi, Michigan! The National Model Railroad Association® (NMRA®) is excited to bring together model railroad enthusiasts, retailers, manufacturers, and hobbyists for this premier event at the Suburban Collection Showplace on July 19-20, 2025. As one of the industry's most anticipated shows, the NTS offers unique opportunities to showcase products, connect with dedicated enthusiasts, and share the joy of model railroading with the public.

Event Highlights

- Demonstrations LIVE** ◀
Multiple manufacturing demonstration: Woodland Scenics, Craftsman corner for the hands on experience and so much more!
- Product Announcements & Vendors Market** ◀
yes, you will be able to buy all of the things
- NMRA 90th Anniversary Celebrations** ◀
Help us celebrate our 90th anniversary with several events throughout the show.
- Over 25+ layouts** ◀
Over 25 layout of ALL scales and counting

Oh and did we mention that THOMAS is coming? Bring the kids!

Website
www.nmra.org

Contact us
ntsreg@nmra.org







THE BUECHEL DEPOT

HAS BEEN COMPLETELY REMODELED
AND THE PROPERTY WILL FEATURE:

- A COMMUNITY GARDEN
- FARMERS MARKETS
- VENDOR MARKETS
- SHORT TERM SPACE LEASING
- A GIFT SHOP **NOW OPEN** DAILY 10 TO 7, CLOSED MONDAY
- RAILFANNING 8 TO 8 DAILY
- AND MORE TO COME

MORE INFORMATION

LOCATION – [GOOGLE MAP LINK](#)

WEBSITE – <https://atthetraindepot.com/>

FACEBOOK – [THE TRAIN DEPOT ON FACEBOOK](#)

INSTAGRAM – [THE TRAIN DEPOT ON INSTAGRAM](#)

At The Buechel Train Depot, we are passionate about creating a vibrant, inclusive community space that honors the past while fostering future growth. Located at the historic Buechel Train Depot in Louisville, our mission is to be a dynamic place where residents can connect, grow, and thrive together.



ROUNDHOUSE ELECTRIC TRAINS
Brownsboro Road Shopping Center
4870 Brownsboro Center
Louisville, KY 40207
(502) 895-2466

SUPPORT YOUR LOCAL HOBBY SHOP
CLICK FOR HOURS & MORE INFORMATION
Roundhouse Electric Trains



UPSCALE HOBBIES

123 S Indiana Ave
 Sellersburg, IN 47172
 (502) 882-0664

TUESDAY THRU FRIDAY 10 to 6
 SATURDAY 10 to 5
SUPPORT YOUR LOCAL HOBBY SHOP
CLICK FOR MORE INFORMATION
UpScale Hobbies



SCALE REPRODUCTIONS

Hikes Point – McMahan Plaza
 3073 Breckenridge Lane
 Louisville, KY 40220
 (502) 459-5849

SUPPORT YOUR LOCAL HOBBY SHOP
CLICK FOR HOURS & MORE INFORMATION
Scale Reproductions



R & J DETAILS

HO Scale

Model Railroad Detail Parts

Rick Geerts - Owner

Shop the Online Store

R & J Details



VISIT
DONATE
VOLUNTEER
BECOME A
MEMBER

[KENTUCKY RAILWAY MUSEUM](http://Kentucky Railway Museum)

THE DEPOT RAILROAD MUSEUM

Part of the John Hay Center
206 S College Ave

Salem, IN 47167

(812) 883-1884

CLICK FOR HOURS & MORE INFORMATION

The Depot Railroad Museum

OFFICERS

Superintendent:	Ron Ellison
Asst. Supt:	Fred Soward
Clerk:	Rick Maloney
Treasurer:	Mike Berry

TRUSTEES

Stan White
Darcy Elliott
Russ Weis

COMMITTEE DIRECTORS

Achievement Program	Mark Norman
Contests	Barry Christensen
Tool Trustee	Mike Berry
Member Relations	Stan White
Member Welfare	Mike Berry
Media	Ron Ellison
Meetings & Programs	Russ Weis
Pie Card	Bob Dawson
Train Show and Sale	Ron Ellison
T-Trak	Bruce DeMaeyer
Webmaster	Fred Soward

MID CENTRAL REGION OFFICERS

President:	Jerry Doyle
Vice-president:	Frank Trocchia
Secretary:	Bruce DeMaeyer
Treasurer:	Barbara Soward

To contact a Division 8 board member or committee director call or text (502) 653-5371 and tell us your needs. We'll get back to you. To contact Division 8 or any board member or committee director by email use - division8.mcr.nmra@gmail.com

THE PIE CARD

Division 8-MCR-NMRA
Box 189
Eastwood, KY 40018-0189
502-653-5371

Editor: Bob Dawson
Asst. Editor: Fred Soward
Publisher: Ron Ellison

The Pie Card is published twelve times a year by Division 8 of the National Model Railroad Association, Mid Central Region.

Please address all correspondence to Bob Dawson, Editor, 7305 Ticonderoga Dr., Louisville, KY 40214, or email:

dawsobl@aol.com.

Deadline for submission of articles is the 20th day of the previous month. The Pie Card goes to press by the first of each month. Photos are preferred to be a JPEG format. Documents should be submitted as a Word or similar format. No PDF's please.

DIVISION 8 COMPANY STORE IS OPEN FOR BUSINESS

**Available:**

Division 8 Polo Shirts, T-Shirts, Sweat Shirts, Long Sleeve Denim Shirts, Fleece Jackets, and Baseball Caps
For selections, prices, and order form, go to: div8-mcr-nmra.org and click on "Company Store."



New T-Shirt

DIVISION 8 COMPANY STORE IS OPEN FOR BUSINESS

Shop here anytime - [Division 8 Company Store](http://Division8CompanyStore)
CLICK HERE TO ORDER [Division 8 Mid Central Region NMRA](http://Division8MidCentralRegionNMRA) or **CALL** (502) 653-5371

And **CLICK** or **CALL** if you have any questions. We'll get back to you right away.

Is your ensemble ready for Division 8 Summer Picnic? Do you have a Division 8 logo t-shirt? Now's the time to get your *outfit on track*. We're supposed to take a train ride in a first class air conditioned car at the picnic. You might need a fleece to accompany your t-shirt. Visit the Company Store today before it's too late.