

# The Pie Card

Volume 59, July 2025, Number 7



Mid Central Region, National Model Railroad Association



## FROM THE SUPERINTENDENT'S DESK

By Ron Ellison

It's July and that means it's time for the **2025 DIVISION 8 SUMMER PICNIC!**

A catered lunch this year with BBQ pork with 3 BBQ sauces, BBQ Roasted Chicken, Hawaiian Buns, Southern-style Coleslaw, Potato Salad,

Southern-style Green Beans. For dessert, assorted cookies; chocolate chip, oatmeal raisin, and peanut butter. And 3 beverages; lemonade, tea, and citrus water.

The Picnic lunch will be at the [Woodford County Agriculture Resource Building](#). Following lunch will be the 2024/2025 Charlie Keeling Model Contest Awards – 1st, 2nd and 3rd. Then we will board a First-Class air-conditioned coach with plush reclining seats and take a 90-minute train ride at the [Bluegrass Scenic Railroad and Museum](#) directly across the street from lunch.

You must reserve ahead. Later in this edition of *The Pie Card*, you will find the Picnic Flyer with the link to reserve and a map link to the Woodford County Ag Resource Building. All this PLUS a train ride for **ONLY \$10.00 per person**.

Here's the day's schedule:

11:30 Gather at the Woodford County Ag Resource Building  
12:00 Lunch is served  
12:45 Annual Charlie Keeling Model Contest Awards  
13:15 Proceed across the street to the Bluegrass Scenic Railroad  
13:30 Board the train  
14:00 All aboard and depart for Young's High Bridge  
15:30 Return to the Station and visit the Museum and Gift Shop  
16:30 Museum and Gift Shop closes

Have a friend who loves trains? It's a perfect event to meet some Division 8 members and learn about the NMRA. We'll talk briefly about the 90th Anniversary of the NMRA after lunch and before the Contest Awards. That's what the **90 NMRA** logo that you see next to this column and on top of our Timetable is all about.

A few words about our Monthly Modeling Contest. It's true we announce winners for each Contest and the Annual Contest Award winners receive gift cards for \$100, \$75 and \$50. But the spirit of the Contest is about sharing the hobby with fellow members. June 1st, Division 8 had 151 members. But only around 40 members take the time to vote in the Contest. We should show some support for our fellow members who enter the contest and share what they have been working on. You can learn a great deal by taking the time to view the model photos and read the description of the modeling. And we've made it very easy to vote. You receive a ballot in your inbox a few days before each Membership  
(continued on page 7)



## TIME TABLE

**Jul 14-19**, NMRA National Convention, Novi, MI.

**Jul 26**, Sat. Div 8 Picnic, Bluegrass Railroad Museum, Versailles, KY.

**Aug 2**, NMRAX, Virtual YouTube & Facebook.

**Aug 16**, Sat 2PM, Div 8 Hybrid meeting, Jeffersontown Library and Zoom.

**Aug 30**, NMRAX, Virtual YouTube & Facebook.

**Sep 3-6**, National Narrow Gauge Convention, Collinsville, IL.

**Sep 20**, Sat 2PM, Div 8 Hybrid meeting, Jeffersontown Library and Zoom.

**Sep 27**, NMRAX, Virtual YouTube & Facebook.

**Oct 11-12** Division 7 Cincinnati Train & Trade Show.

**Oct 18**, Sat 2PM, Div 8 Hybrid meeting, Jeffersontown Library and Zoom.

**Oct 25**, NMRAX, Virtual YouTube & Facebook.

**Nov 8**, Sat 2PM, Div 8 Hybrid meeting, Jeffersontown Library and Zoom.

**Nov 15, Sat 10AM-3PM, Div 8 Train Show and Sale, Safin Center, Holy Family Parish.**

**Nov 22**, NMRAX, Virtual YouTube & Facebook.

**JUNE 2025 CHARLIE KEELING HYBRID MODEL CONTEST***By Barry Christensen, Contest Chairman*

<b>July</b>	<b>NO CONTEST</b>
August	MOW equipment
September	Photos (model) and photos (prototype)
October	Steam locomotives
November	Displays (no size limit)
December	Highway vehicles
January	Freight cars
February	Non-steam motive power
March	Structures
April	Passenger cars
May	Cabooses
June	Open loads

June saw the final round of the 2024-2025 Charlie Keeling Hybrid Model Contest year with open loads as the subject. Six entries were submitted in this popular category, with honorable mention going to Ed Brennan MMR® for open load farm tractors, to John Helton for "Tanks A Lot, Amigos," and to David Mertz for open load L&N car #21757. Third place goes to Craig Hatter for Monon flatcar with tractor load, second place to Bob Kuchler MMR® for circus wagons on flat cars, and first place to Bob Frankrone for orange cylindrical radiator. Congratulations to each modeler!

Final standings for the 2024-2025 contest year are as follows: Bob Kuchler with 25, Bob Frankrone with 22, Ed Brennan with 19, Steve Lasher with 12, Randall Griggs with 11, Russ Weis with 8, Bruce DeMaeyer with 7, Eric Waggoner with 6, Rick Maloney and Jody McNutt with 5 each, Chris Broughton and Al Goodman with 4 each, Paul Downs and John Helton with 3 each, Craig Hatter and Fred Soward with 2 each, and David Mertz, George Ronn, Barbara Soward and Cecil Stewart with 1 each.

Rather than having a meeting in July, Division 8 will have their annual picnic at Bluegrass Scenic Railroad and Museum in Versailles on Saturday, July 26, when certificates and prizes will be awarded to the first, second and third place winners. The 2025-2026 Charlie Keeling Hybrid Model Contest will begin in August, with the Division 8 meeting scheduled for Saturday, August 16.

Here are a few things to be aware of as the new model contest year kicks off:

Clearly identify on the model contest entry form any prototype photos submitted.

List the scale of the model entered on the model contest entry form.

Enter one time per category (individual entries may include more than one related model).

*(continued to column 2)*

**NO MEETING IN JULY-DIVISION 8 PICNIC**

The Division 8 Picnic is Saturday July 26 at the Bluegrass Railroad Museum in Versailles, KY. See flyer in this issue for details.

Our next meeting will be 2 PM **Saturday August 16** at the Jeffersontown Library, 10635 Watterson Trail, Louisville, KY 40299. To maintain the security of the meeting, the Zoom connection information will be sent directly to members by email about a week prior to the meeting and will not be published online.

**CONTEST** *(continued from column 1)*

Remember that the January contest focuses on freight car modeling and the June contest focuses on open load modeling.

**The August Contest is *MOW EQUIPMENT***

We will send out a reminder but below are some of the Contest timeline dates for August:

- August 2nd - First day to submit entries
- August 9th - Last day to submit entries
- August 14th - Members will receive the Contest Ballot
- August 14th & 15th - Voting in the Contest Ballot ends @ 10:00 PM on the 15th
- August 16th - Winners announced at the meeting - 1st, 2nd and 3rd
- September 6th - First day to submit September contest entries

**MODEL PHOTOS & PROTOTYPE****PHOTOS** *(2 separate contests)*

If you need more information, go here - <http://div8-mcr-nmra.org/site/html/contest.html>.

To enter the August Contest, use the **REVISED Contest Entry Form** on the Division 8 website here → [Contest](#) and just follow the simple instructions included in the form. Entering the Contest has never been easier.

Contest dates will also be listed in the Groups.io Calendar. And as always if you have questions, comments, or need help, email [division8.mcr.nmra@gmail.com](mailto:division8.mcr.nmra@gmail.com)

We will publish the Contest timeline dates each month in **The Pie Card**.



**JUNE CHARLIE KEELING MODEL CONTEST**

*Photos by the Modelers*



**FIRST PLACE**

Above:

Bob Frankone's "Orange Cylindrical Radiator."

Bob scratchbuilt this HO scale load using Evergreen styrene rods and plastic tops from coffee maker packets. The radiator is comprised of 56 short cooling rods, 12 long cooling rods, four discs, and a hollow tube running through its center.

He built the radiator in two halves using the short rods, then joined the two halves together with the 12 long rods. He inserted the large diameter center tube after painting it black. It is mounted in a cradle made from scale lumber.



**SECOND PLACE**

Left:

Bob Kuchler's MMR®

"Circus Wagons on Flat Cars"

Bob assembled and painted five N scale circus wagons. Inside of three of them he placed a lion, a tiger, and a bear. One of the others is a band wagon and the last has mirrors on the sides of it. Bob secured the wagons with rope colored EZ Line and wooden cleats to prevent the wheels from rolling. A printed paper wood deck was added to each car and the cars were weathered with Pan Pastels but the wagons were kept clean.

*(continued to page 4)*



**JUNE CHARLIE KEELING MODEL CONTEST** (continued from page 3)



**THIRD PLACE**

Left:

Craig Hatter's "Monon flatcar with tractor load."

The car is an HO Proto-2000 GSC 53'4" flatcar with a laser cut deck from AMB that was weathered with washes and some artists oils. The load is Life Like tractors that have had wheels and stacks painted and securement is with Northeastern Scale wood blocks, Photo by Russ Weiss.

**HONORABLE MENTION**



Left:

Ed Brennan's MMR® HO "Farm Tractors."

Right:

David Mertz's HO "Open Load L & N Car No 21757."



Left:

John Helton's HO "Tanks A Lot Amigos."





**JUNE MEETING PHOTOS**

*Photos by Barbara Soward unless noted otherwise*

**AWARDS**



Left:

Barbara Soward, Mid Central Region Treasurer, presented Russ Weis with the 2025 Mid Central Region Directors Award.

*Photo by Fred Soward MMR®*



Right:

Chuck Endreola, Division 7, MCR, Superintendent, presented Mike Berry with the 2025 Russ Wenderfer Award.



Left:

Bob Kuchler (left), standing in for Achievement Program Director Mark Norman MMR®, presented Stan White (right) with his final Merit Award for Master Builder Structures.



Right:

Contest Director Barry Christensen (left) presented Bob Frankrone (right) with a certificate for winning the June 2025 Division 8 Charlie Keeling Model Contest - Open Loads.

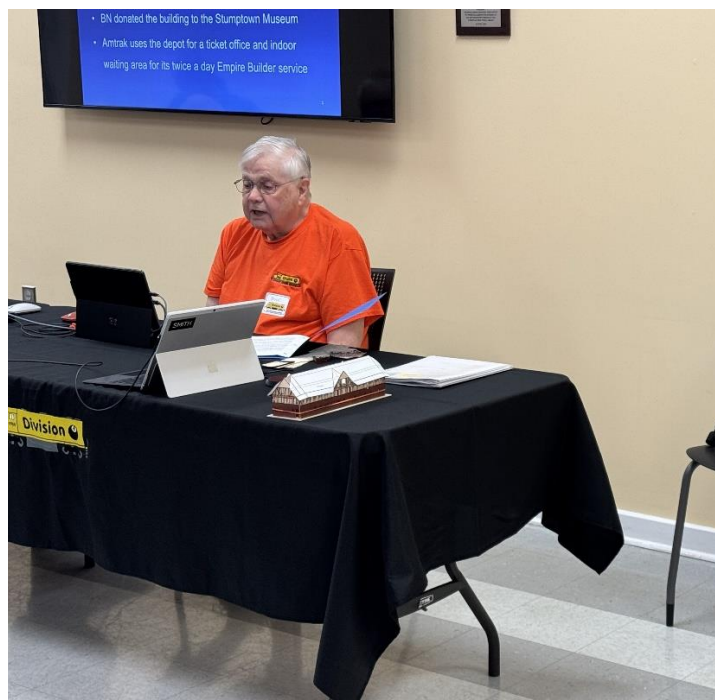
*(meeting photos continued on page 6)*

**JUNE MEETING PHOTOS** (continued from page 5)



Left:

Fred Soward MMR® presented a Back to Basics segment about the Division 8 Groups.io email group.



Right:

Bruce DeMaeyer gave his "Building the Whitefish, MT, Depot Using New Techniques" presentation.



Left:

"Show & Tell" Table.

The big top goes with Bob Kuchler's circus train cars.

The S Scale Railgon is Randy Griggs'.

The HO Scale Railgon and the HO and N Scale used tie loads are by Fred Soward MMR®.

All the other open loads are Bob Frankrone's.

**FROM THE SUPERINTENDENT'S DESK** *(continued from page 1)*

Meeting. If you are not participating in the contest, please, please, please, take a few minutes when you receive the next ballot on August 14th and take a look at the entries and vote. The August Contest is Maintenance of Way Equipment. That's always a good one.

Know also that you can view photos of past contests on the Division 8 Contest web page here [Charlie Keeling Monthly Model Contest](#). And you might ask, who was Charlie Keeling? Charlie was Contest Chairman for 20 years and helped steer the Contest into what it is today. You can read a little more about the background of the Contest here [Charlie Keeling Monthly Model Contest Rules](#)

We hope to see you at the 2025 Division 8 Summer Picnic.

**FROM THE ASSISTANT SUPERINTENDENT**

*By Fred Soward MMR®, Division 8 Assistant Superintendent*

The Picnic is Coming! The Picnic is Coming!! The Picnic is Coming!!! And so is the NMRA National Convention in Novi, Michigan. They're both going to be great events. By the time you read this, we'll be within a few days of both, so if you haven't already done so, go get yourself registered for both NOW.

- The K&I has completed their move to Clark Station in Clarksville. If you've not made it over there to check out the new facility, it's past time to do that.
- The SIR is still waiting for their host facility, the city, and the plumbers to work through issues there before they can get back into their layout room.
- We finally made it happen! We've successfully completed two operating sessions on Tom Guenther's new layout. We acknowledge it wasn't perfect and we knew that was going to happen. Everyone enjoyed themselves and we have a list of things to fix/repair/change before we move forward with even more operating sessions there.
- Barbara & I had an unscheduled midwestern adventure this past month that included some railroad stufh. You can read all about it elsewhere in this issue of The Pie Card.
- It won't be long before we'll be able to point at the Kuchler home and honestly say, "It's a circus in there!" Bob has been working on all types of N scale circus stufh including wagons and a Big Top tent this past month. Some of his efforts were on display in the June Modeling Contest. You can see more on his Facebook page.
- There was also a 3-day trip with Ron Ellison, Bob Kuchler MMR®, and Rick Maloney MMR® to Bob Weinheimer's MMR® Pennsylvania Southern layout and several other layouts in The Coal Division in West Virginia.
- And, finally, I was able to lay down a little more than six feet of track on our layout last month.

Most of the rest of the month was spent in preparation for the 2025 NMRA National Convention so we can make firm decisions about the Vision 2035 project that Gordy wrote about in the April 2025 edition of the NMRA Magazine. Keep your eyes and ears open for a few announcements coming out of Novi. Much of the decision making in Novi is expected to guide the organization over the next 10 years. You won't hear about some of that immediately, but "soon," so stay tuned.

**JUNE MEETING REPORT**

*By Rick Maloney MMR® Division 8 Clerk*

Division 8 held its June Membership Meeting at the Jeffersontown Branch of the Louisville Free Public Library. Ron Ellison called the meeting to order at 2:00 PM. He welcomed the members present in the room and those who were with us on Zoom. We were told of 2 new members; Mitch Shirrell and Chris Wilkerson. And Craig Hatter is a reraill.

MCR Treasurer, Barbara Soward, presented the Mid Central Region 2025 Directors Award to Russ Weis for his service to Division 8 and the Mid Central Region.

Ron introduced Chuck Endreola, Division 7 Superintendent, who presented the Cincinnati Division 7 2025 Russ Wenderfer Award to Mike Berry. Superintendent Endreola explained that this award was for Mike's service to Division 8.

Treasurer Mike Berry's report was accepted as presented.

*(continued on page 8)*



**JUNE MEETING REPORT** *(continued from page 7)*

Wearing his Member Welfare Director's hat, Mike Berry reported that Ken Petit had been hospitalized and is home. Ron Steilberg's wife Julie Valentin has passed away.

Standing in for Achievement Program Director Mark Norman MMR®, Bob Kuchler MMR® presented Stan White with a Structures Merit Award for his "Hudson Chemical" model, this will complete the requirements for his MMR Structure Award. Congratulations Stan.

Barry Christensen announced the results of the monthly model contest. Ed Brennan MMR®, John Helton, and David Mertz all received Honorable Mention. Third place went to Craig Hatter; 2nd place to Bob Kuchler MMR® and 1st place to Bob Frankrone, for his Orange Cylindrical Radiator. He reminded the division that there is no July contest and the August contest is Maintenance of Way Equipment. Barry told us of changes to the 2025/2026 Model Contest. We should identify any prototype photos submitted. We should also list the scale of the model entered.

Russ Weis announced that Bruce DeMaeyer is presenting "Building the Whitefish Depot Using New Techniques" today. Russ announced that he will give the August presentation. He also made an appeal to the members to volunteer for open house tours for upcoming months.

Superintendent Ellison said our 2025 Summer Picnic is on July 26, 2025. Ron reminded us that our November Train Show and Sale will be here before we know it, and that we will need members to volunteer to help ensure that we have a successful show.

Mike Berry announced that the new name for the Division 8 Library, is the "Tool Chest." Library type items have been eliminated, but we will have tools available for loan. The name of the Librarian will be changed to Tool Trustee.

Fred Soward's MMR® Back to Basics segment was on the advantages of joining & participating in Division 8 Groups.io email group. After the break, Bruce DeMaeyer gave his presentation. The meeting was adjourned at 3:33 PM.

**MEMBER WELFARE**

*By Mike Berry Member Welfare Chairman*

This month we had one member with a short hospital stay - Ken Pettit. A get well and gift card was sent to Ken. Ron Steilberg's wife, Julie Valentin passed away. As always, please let us know if you hear of any member with an issue. And the Member Welfare Fund donations for this fiscal year stand with a \$200 gift from the Charlie Keeling family, \$100 anonymous, and \$40 from Ed Brennan.

**MEMBERSHIP REPORT**

*By Stan White Member Relations Chairman*

As of the last report received from the Mid Central Region, we have 151 active members. We had nine renewals: Jim Hall, Craig Hatter, John Helton, Lisa Helton, Joseph Martin, Stephen Summers, Jackson Thomas, Rob Toler, and The Kentucky Railway Museum. Welcome to two new members: Chris Wilkerson, Mitch Shirrell. Two memberships have expired: Dr. Mike Shane, and Rick Geerts.

**DISMANTLING A MODULAR LAYOUT**

*By Greg Gephart (photo and sketch by Greg)*

You may be asking why I am not writing an article on how to assemble a modular layout. Better yet, how to assemble a layout period. That may come soon. But if you think about it, most of you already have a layout. The real question is, who will take apart your layout when you are gone or are not able to do it? If your layout is a worthy one to have it will be a great joy for someone who can take it and reassemble it and enjoy it for more years to come.

It also gives great relief to the person who must have it removed. When I told my wife I wanted to build a layout in my shop, I assured her it would be easy to disassemble so it would not be a burden or a mess to deal with. We both watched the demise of an O scale layout that filled up a basement that was built to be there forever.

So, the following instructions are based on my layout that is currently in my shop. All layouts are unique in their own way. I feel that these instructions will be a guide for you to start compiling and be ready to write up as we never know *(continued on page 9)*



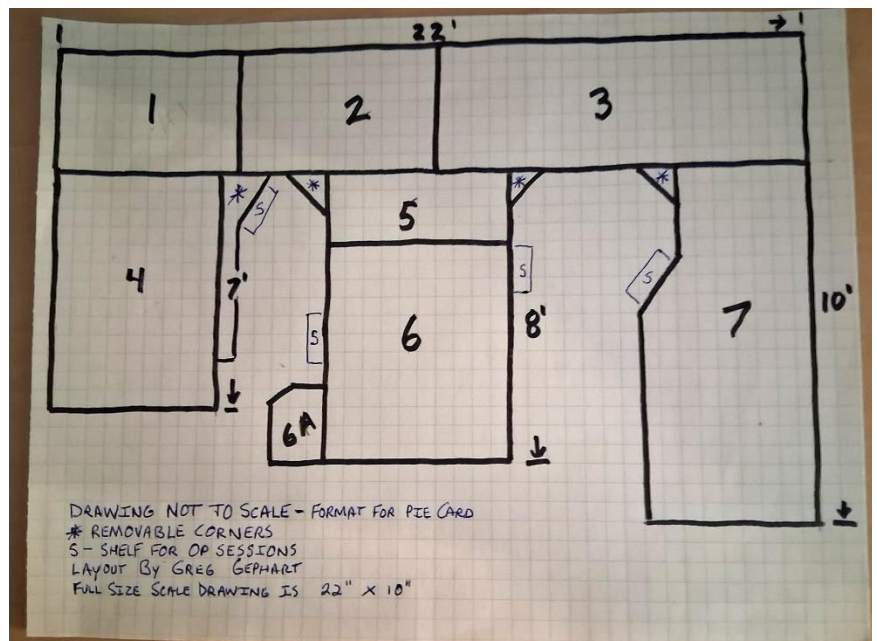
**DISMANTLING A MODULAR LAYOUT** (continued from page 8)

when that day will come. You may also think that your layout is not that good or worth passing on. But if it is a modular design, it can be removed and adapted by the next person to suit their needs.

1. You should have a drawing of the layout with the modules numbered. NOTE: scaled is better to show exact locations of each module.
2. Take plenty of pictures before you remove anything.
3. Have 3-4 people available to help with the process.
4. Remove & pack any loose or non-permanent items, IE: structures, people, rolling stock, etc.
5. Remove backdrops, view blocks and mark locations of these items for easy reinstall later.
6. Remove and pack skirting and the 4 shelves. NOTE: the shelves just lift out and are also numbered on the back.
7. Disconnect brackets underneath the layout attached to the wall. NOTE: there are 6 brackets attached with one screw in each bracket in the fascia. These brackets were installed to keep the layout from moving and hold the backdrops in place too.
8. Disconnect power plugs and any other plugs from the wall outlets.
9. Unplug/disconnect all wiring underneath at module connections. NOTE: mark, code & attach to underside of layout for ease of transporting modules. This includes the Loconet cables connected to the Digitrax UP7 ports.
10. Remove OR cut all track connections at module seams. NOTE: there are smaller modules (or addons to the modules) that you may not want to disconnect. That will be up to you.
11. Disconnect modules where necessary for ease in transporting. NOTE: all modules are numbered underneath for easy identification.
12. Remove all Digitrax components in power box underneath module #6 in the front of the layout. NOTE: there are 2 power districts. DCS240+ powers #1 DB210 powers #2. The shelves in the power box are adjustable and easy to remove.
13. Remove the rear panels from the power box and you will see where to remove the power box from module #6.
14. The brackets holding the legs are all numbered and so are the legs. When the modules are lifted the legs should drop out. Make sure the numbers on the legs face outward for ease of reinstalling.

As you stand in front of the layout at module #6 (see sketch below), the left side of the layout is District #1 and to the right side is District #2. On the scale drawing it will be marked where these Districts start and end. I hope you enjoy this layout as much as I have.

List of tools you will need: 10mm open end wrench (for leveling legs).  
 9/16" combination wrenches for bolts & nuts connecting the modules.  
 9/16" regular & deep sockets. You may want crescent wrenches also.  
 #2 square drive and #2 Philips bits and screwdrivers.  
 Appropriate screwdrivers for Digitrax system.  
 Diagonal cutting pliers for wire cutting.  
 Dremel cutting wheel for cutting track.



Left: Part of the layout showing modular section 7.

**BARBARA & FRED'S MOST EXCELLENT EARLY SUMMER ADVENTURE**

*Photos by Fred Soward, MMR, except where noted*

This trip started as a trip to attend a memorial service for a close friend in the St Louis, MO, area. In the midst of getting our travel setup, Barbara asked, "How much further is it to Oklahoma? We haven't seen Alex in ages. And maybe we could come back through Little Rock to see your sister?" And with that, the overnite trip was extended to a 5-day adventure, from home to Lee's Summit, MO, for the memorial service for our good friend Julie Hegele, to Chickasha, OK, to visit our nephew Alex and his family, to Little Rock, AR, to visit my youngest sister Donna and her family, to Collierville, TN, for lunch with Lucy Dormont (NMRA Social Media Manager) and her two sons, and home again. Along the way, we took a few detours for some railfanning and rail history. More than 2,000 miles of driving. In five days.



Left: On the way to see their nephew Alex, Fred & Barbara visited the Chickasha, OK, train depot. They knew about this Rock Island structure in town, so they planned to make a quick stop to get a few photos for Steve Lasher. Unfortunately, it was locked up behind a metal fence. Amtrak doesn't run this way, so it's just a museum now.



Right: This Burlington Northern caboose is stored on the same property as the Rock Island depot in Chickasha, OK. This was as close as Fred & Barbara could get to it without hopping the fence.



Left: Across the street from the Rock Island depot in Chickasha, OK, Barbara & Fred found a huge surprise! If you've seen the 1983 "A Christmas Story" movie, you'll likely remember the "Leg Lamp" award that the father received. This fifty-foot tall structure replicates that Leg Lamp from the movie. The "Fra-jill-ee" box is ten-feet high and the lamp itself is 40-feet high. You can read all about it at this link:

<https://www.visitchickasha.com/the-leg-lamp/story>

*Photo by Barbara Soward*

*(continued on page 11)*



**BARBARA & FRED'S MOST EXCELLENT EARLY SUMMER ADVENTURE** (continued from page 10)

Left: During a refueling stop, Fred checked for local museum or rail fan stops and found the Faulkner County Museum in Conway, AR, was just a two-block detour off their path to get back on the Interstate. Located in the former jailhouse, there are many local area displays, including several related to area railroads, and the entire upstairs is an HO scale model railroad representing the area.

Right: Take the stairs to the second level for an HO scale model railroad inside the Faulkner County Museum in Conway, AR.



Left: The second floor of the Faulkner County Museum, houses a large HO scale model railroad. The layout runs on NCE DCC. The scenery is 100% completed and is well detailed. Most of the trains are either Rock Island or Missouri Pacific and represent anything from transition to modern era.

Right: While staying in Little Rock, AR, Fred's youngest sister, Donna, took them out for dinner at "All Aboard Restaurant and Grill," a railroad-themed restaurant near where they live. Her son was working as the grill chef that night, so it was the only way Fred & Barbara would be able to see him while in town.

(continued on page 12)





**BARBARA & FRED'S MOST EXCELLENT EARLY SUMMER ADVENTURE** *(continued from page 11)*



Left: At the All Aboard Restaurant and Grill in Little Rock, AR, your meal is delivered to your table by an overhead railroad. The train automatically stops at your table and the food is lowered to table level on a small lift.

Right: Barbara & Fred were surprised by all the railroad stufh around the square in Collierville, TN. Their scheduled lunch there with Lucy Dormont (NMRA Social Media Manager) didn't happen becuz of a last-minute scheduling conflict for her. But, despite that, they still had a great time in the area. It's all located about 30 miles east of downtown Memphis, right off of I-269.



Left: The Collierville, TN, depot has been moved several feet from its original location, it's been fully renovated, and is now an awesome little museum and information center.

*(continued on page 12)*



**BARBARA & FRED'S MOST EXCELLENT EARLY SUMMER ADVENTURE** *(continued from page 12)*



Left: This Southern Observation Car is one of several pieces of railroad equipment on the tracks next to the Collierville, TN, depot. It's free to wander through and it's fully open to the public.



Right: This Southern caboose and Frisco locomotive are two of the pieces of railroad equipment on the tracks next to the Collierville, TN, depot. The interior of the caboose and the cab of the locomotive are free to wander through and they're both fully open to the public.



Left: Fred doing a bit of railfanning at the Collierville, TN, depot. While there, Fred & Barbara caught a BNSF and a NS train - both moving way fast!

**K & I MODEL RAILROAD OPEN HOUSE**

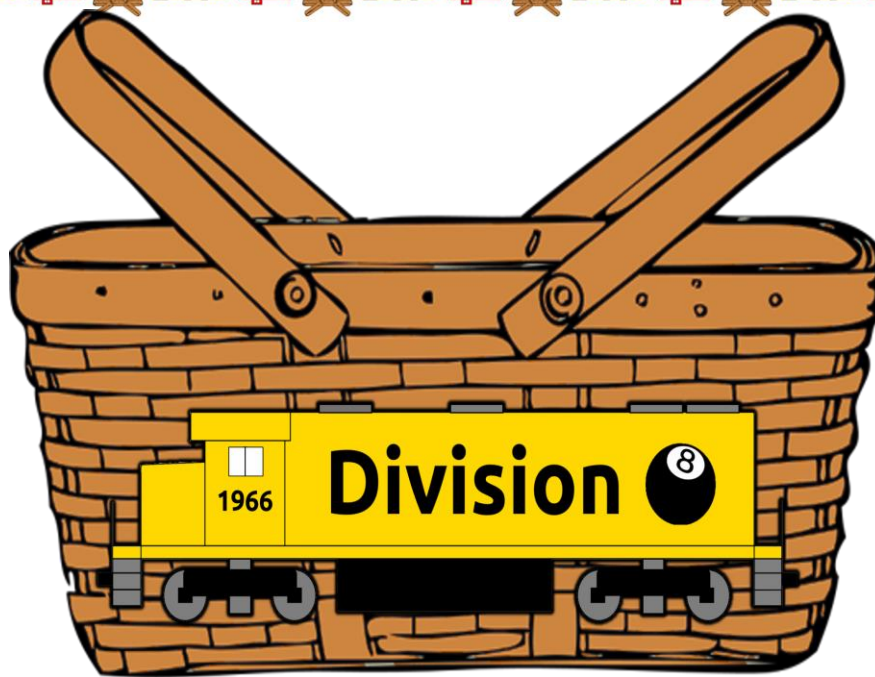
The K & I Model Railroad hosted an open house at their new club house in the Clark Station Shopping Center in Clarksville, IN

Below left: A view of the railroad.

Below right: Mike Berry wiring the large staging yard.







# **DIVISION 8 PICNIC**

## **SATURDAY JULY 26, 2025**

### **CATERED LUNCH & TRAIN RIDE**

### **BLUEGRASS RAILWAY & MUSEUM**

**Versailles, KY 40383**

[MAP LINK to LUNCH VENUE](#)

**ANNUAL AWARDS FOR THE MODEL CONTEST WILL BE PRESENTED**  
**AND CATERED LUNCH WILL BE PROVIDED**  
**PLUS ROUNDTRIP TRAIN RIDE**

**You'll have some free time to wander and see the museum**

**Tickets are \$10.00 and must be purchased in Advance**

[Click to Buy](#)





# 2025 NATIONAL CONVENTION

**Experience Model Railroad Reimagined: A Convention Like No Other**

The 2025 NMRA Convention breaks new ground with an innovative approach that puts you first. Get maximum value at minimum cost - featuring 90+ expert clinics, 60 spectacular layouts spanning up to 3,000 sq. ft., and exclusive prototype tours including Ford plant access and Detroit River industrial cruises.

Enjoy unlimited layout visits and operating sessions, free parking, flexible scheduling, and convenient suburban location - all at just 40% of traditional convention costs. Whether you're an NMRA member or newcomer to the hobby, join us Monday through Saturday for an accessible, value-packed celebration of model railroading.

Register now to secure your spot at this groundbreaking event, where tradition meets innovation.



**Modeling With  
The Masters®**



**Layout Tours  
of all scales**



**Prototype  
Tours**



**Over 50 great  
clinics**

## \$125 Early Rate

**BOOK YOUR TICKET NOW**  
[WWW.NMRA2025.COM](http://WWW.NMRA2025.COM)





**NATIONAL MODEL RAILROAD ASSOCIATION PRESENTS:**



# 2025 NATIONAL TRAIN SHOW

 **JULY 19-20, 2025**  
**10:00 AM - 04:00 PM**

## About Our Event!

Thank you for your interest in exhibiting at the 2025 National Train Show® in Novi, Michigan! The National Model Railroad Association® (NMRA®) is excited to bring together model railroad enthusiasts, retailers, manufacturers, and hobbyists for this premier event at the Suburban Collection Showplace on July 19-20, 2025. As one of the industry's most anticipated shows, the NTS offers unique opportunities to showcase products, connect with dedicated enthusiasts, and share the joy of model railroading with the public.

## Event Highlights

- Demonstrations LIVE** ◀  
Multiple manufacturing demonstration: Woodland Scenics, Craftsman corner for the hands on experience and so much more!
- Product Announcements & Vendors Market** ◀  
yes, you will be able to buy all of the things
- NMRA 90th Anniversary Celebrations** ◀  
Help us celebrate our 90th anniversary with several events throughout the show.
- Over 25+ layouts** ◀  
Over 25 layout of ALL scales and counting

*Oh and did we mention that THOMAS is coming? Bring the kids!*



Website  
[www.nmra.org](http://www.nmra.org)

Contact us  
[ntsreg@nmra.org](mailto:ntsreg@nmra.org)

  **national model railroad association**



# **Annual Train Show & Swap Meet @ First Presbyterian Church**



**Hosted by the Southern Indiana Railroad**

**Saturday September 27, 2025**

**Swap Meet : 10 am to 2 pm**

**Layouts : 10 am to 3 pm**

**Admission: 1-Can Donation for Food Bank**

**Location: First Presbyterian Church**

**222 Walnut Street @ Chestnut Street**

**Jeffersonville, Indiana 47130**

**For Information on tables for the swap meet contact:**

**Darcy Elliott 502-424-8682**

**Duke Green 812-267-0761**

**Ken Pettit 812-282-1658**

**Email: [southernindianarailroad@gmail.com](mailto:southernindianarailroad@gmail.com)**

**[www.southernindianarailroad.com](http://www.southernindianarailroad.com) or [www.facebook.com/sirailroad](https://www.facebook.com/sirailroad)**



**ROUNDHOUSE ELECTRIC TRAINS**  
**Brownsboro Road Shopping Center**  
**4870 Brownsboro Center**  
**Louisville, KY 40207**  
**(502) 895-2466**  
**SUPPORT YOUR LOCAL HOBBY SHOP**  
**CLICK FOR HOURS & MORE INFORMATION**  
[Roundhouse Electric Trains](http://Roundhouse Electric Trains)



**UPSCALE HOBBIES**  
 123 S Indiana Ave  
 Sellersburg, IN 47172  
 (502) 882-0664  
 TUESDAY THRU FRIDAY 10 to 6  
 SATURDAY 10 to 5  
**SUPPORT YOUR LOCAL HOBBY SHOP**  
**CLICK FOR MORE INFORMATION**  
[UpScale Hobbies](http://UpScale Hobbies)



**SCALE REPRODUCTIONS**  
 Hikes Point – McMahan Plaza  
 3073 Breckenridge Lane  
 Louisville, KY 40220  
 (502) 459-5849  
**SUPPORT YOUR LOCAL HOBBY SHOP**  
**CLICK FOR HOURS & MORE INFORMATION**  
[Scale Reproductions](http://Scale Reproductions)



**VISIT**  
**DONATE**  
**VOLUNTEER**  
**BECOME A**  
**MEMBER**

[KENTUCKY RAILWAY MUSEUM](http://Kentucky Railway Museum)

**R & J DETAILS**  
**HO Scale**  
**Model Railroad Detail Parts**  
**Rick Geerts - Owner**  
**Shop the Online Store**  
[R & J Details](http://R & J Details)

## THE DEPOT RAILROAD MUSEUM

**Part of the John Hay Center**  
**206 S College Ave**  
**Salem, IN 47167**  
**(812) 883-1884**

**CLICK FOR HOURS & MORE INFORMATION**

[The Depot Railroad Museum](http://The Depot Railroad Museum)



## Division 8, MCR, NMRA

<http://div8-mcr-nmra.org>**OFFICERS**

Superintendent: Ron Ellison  
 Asst. Supt: Fred Soward  
 Clerk: Rick Maloney  
 Treasurer: Mike Berry

**TRUSTEES**

Stan White  
 Darcy Elliott  
 Russ Weis

**COMMITTEE DIRECTORS**

Achievement Program Mark Norman  
 Contests Barry Christensen  
 Tool Room Manager Mike Berry  
 Member Relations Stan White  
 Member Welfare Mike Berry  
 Media Ron Ellison  
 Meetings & Programs Russ Weis  
 Pie Card Bob Dawson  
 Train Show and Sale Ron Ellison  
 T-Trak Bruce DeMaeyer  
 Webmaster Fred Soward

**MID CENTRAL REGION OFFICERS**

President: Jerry Doyle  
 Vice-president: Frank Trocchia  
 Secretary: Bruce DeMaeyer  
 Treasurer: Barbara Soward

To contact a Division 8 board member or committee director call or text (502) 653-5371 and tell us your needs. We'll get back to you. To contact Division 8 or any board member or committee director by email use - [division8.mcr.nmra@gmail.com](mailto:division8.mcr.nmra@gmail.com)

**THE PIE CARD**

Division 8-MCR-NMRA  
 Box 189  
 Eastwood, KY 40018-0189  
 502-653-5371

Editor: Bob Dawson  
 Asst. Editor: Fred Soward  
 Publisher: Ron Ellison

The Pie Card is published twelve times a year by Division 8 of the National Model Railroad Association, Mid Central Region.

Please address all correspondence to Bob Dawson, Editor, 7305 Ticonderoga Dr., Louisville, KY 40214, or email: [dawsobl@aol.com](mailto:dawsobl@aol.com).

Deadline for submission of articles is the 20<sup>th</sup> day of the previous month. The Pie Card goes to press by the first of each month. Photos are preferred to be a JPEG format. Documents should be submitted as a Word or similar format. No PDF's please.

**DIVISION 8 COMPANY STORE IS OPEN FOR BUSINESS****Available:**

Division 8 Polo Shirts, T-Shirts, Sweat Shirts, Long Sleeve Denim Shirts, Fleece Jackets, and Baseball Caps  
 For selections, prices, and order form, go to: [div8-mcr-nmra.org](http://div8-mcr-nmra.org) and click on "Company Store."



New T-Shirt

**DIVISION 8 COMPANY STORE IS OPEN FOR BUSINESS**

Shop here anytime - [Division 8 Company Store](http://Division8CompanyStore)  
**CLICK HERE TO ORDER** [Division 8 Mid Central Region NMRA](http://Division8MidCentralRegionNMRA) or **CALL** (502) 653-5371

And **CLICK** or **CALL** if you have any questions. We'll get back to you right away.

Is your ensemble ready for the rest of the summer months? Do you have a Division 8 logo t-shirt? And it's not too early to get your fall and winter Division 8 uniform up to date. Look your best! Visit the Company Store today and get your outfit on track.