

The Pie Card

Volume 58, March 2024, Number 3



Mid Central Region, National Model Railroad Association

FROM THE SUPERINTENDENT'S DESK

By Ron Ellison



One of our prior Division 8 Superintendents was fond of saying the job is really pretty simple. First you have the Train Show, then the Picnic, followed by another Train Show and then the Christmas Party. It's easy. Anyone can do it. BTW – here's a

link to the past superintendents in case you want to verify how easy it is with one of them. [List of Division 8 Superintendents](#)

And so, the first event of the year, the Train Show & Sale, is this month on March 16th. There's a flyer later in this edition of *The Pie Card* with all the details. You should come to the Show. It's our 34th year. There are all manner of model and prototype train items for sale in all scales. We have layouts. Food and beverages are available. And there are opportunities to win door prizes. Our show is very popular. As a matter of fact, we sold all the dealer tables for this show the day of the last show in November.

And with your NMRA membership card in hand, you can enter the Show at 9:00 AM. It's one of the many benefits of membership. And if you have any questions about the NMRA or Division 8, stop by our tables just inside the Show entrance to the right.

If you didn't know, we sell advance tickets. There's a link on the flyer to buy a ticket or you can head to our website and click on the Train Show flyer on the main page. And if you buy an advance ticket and print it out and present it at admission, you'll have a chance to win a \$50 gift certificate from Roundhouse Electric Trains.

Maybe you are unable to attend this show. I would suggest to you that purchasing an advance ticket would be helpful to us. The Train Show & Sale is after all a fund raiser. It's our only source of revenue for anything we do throughout the year. We don't receive any portion of dues that are paid to the NMRA. It is a very easy way to help us out. And it is quick and simple to purchase a ticket online and you'll receive a receipt for your donation. You could even purchase two tickets if you think we're providing something of value to the communities we all live in and model in.

Because the Train Show & Sale is on a regular membership meeting day, the meeting is a week earlier in March on Saturday the 9th. That means all the Monthly Modeling Contest dates are moved up a week too. Read on later in this issue of *The Pie Card* for more contest information.

And before I sign off this month, don't forget **Division 8 Train Day 2024** coming in April. There's also a flyer later in this issue with all you need to know to attend.

See you at the Division 8 Train Show & Sale

TIME TABLE

Mar 9, Sat 2PM, Div 8 Hybrid meeting, Jeffersontown Library and Zoom.

Mar 9, Sat, Div 7 Flea Market & Train Show, Lakota West Freshman Campus, West Chester, OH.

Mar 16, Sat. Div 8 Train Show & Sale, Saffin Center, Holy Family Parish, Louisville, KY.

Apr 13, Sat 2PM, Div 8 Hybrid meeting, Jeffersontown Library and Zoom.

Apr 13, Sat 10AM-5PM, Division 8 Train Day, Jeffersontown Library. See the flyer in this issue.

May 11, Sat 2PM, Div 8 Hybrid meeting, Jeffersontown Library and Zoom.

May 16-19, Thu-Sun, North Coast Limited MCR Convention, Cleveland, OH.

Jun 8, Sat 2 PM, Virtual Bull Session

Jun 15, Sat 2PM, Div 8 Hybrid meeting, Jeffersontown Library and Zoom.

Jul 20, Sat, Div 8 Picnic TBA.

Aug 4-11, NMRA National Convention, Long Beach, CA.

Aug 17, Sat 2PM, Div 8 Hybrid meeting, Jeffersontown Library and Zoom.

Sep 14, Sat 2PM Div 8 Bull Session on Zoom.

Sep 21, Sat 2PM, Div 8 Hybrid meeting, Jeffersontown Library and Zoom.

FEBRUARY 2024 CHARLIE KEELING HYBRID MODEL CONTEST

By Barry Christensen, Contest Chairman

March	Structures
April	Passenger cars
May	Cabooses
June	Open loads
July	NO CONTEST
August	MOW equipment
September	Photos (model) and photos (prototype)
October	Steam locomotives
November	Displays (no size limit)
December	Highway vehicles
January	Freight cars
February	Non-steam motive power

For February, Division 8's Charlie Keeling Hybrid Model Contest topic was non-steam motive power. There were five entries with honorable mention going to Rick Geerts for his "C40-8W Union Pacific" and to Eric Waggoner for his "L&N GP-30."

Third place goes to Bob Frankrone for his "SOO Line diesel 1212." Second place goes to Steve Lasher for his "TH&B GP-7." First place goes to Rick Maloney for his "LH&SR 18-ton Plymouth Gas Mechanical Switcher." Congratulations to our modelers for these great efforts!

The revised point totals are now: Rick Maloney with 25, Bob Frankrone with 15, Rick Geerts with 13, Steve Lasher with 10, Mark Norman and Russ Weis with 5 each, Eric Waggoner with 3, Kevin Jones and Fred Soward with 2 each, and Bruce DeMaeyer, Darcy Elliott, Ron Ellison, and Al Goodman with 1 each.

The March Contest is **STRUCTURES**

We will send out a reminder but below are some of the Contest timeline dates for March:

- February 24th - First day to submit entries
- March 2nd - Last day to submit entries
- March 7th - Members will receive the Contest Ballot
- March 7th & 8th - Voting in the Contest Ballot ends @ 10:00 PM on the 8th
- March 9th - Winners announced at the meeting - 1st, 2nd and 3rd
- March 30th - First day to submit April contest entries

PASSENGER CARS

If you need more information, go here - <http://div8-mcr-nmra.org/site/html/contest.html> .

To enter the March Contest, use the **NEW Contest Entry Form** on the Division 8 website here → [Contest](#) and just follow the simple instructions included in the form. Entering the Contest has never been easier. (Continued in column 2 this page)



MARCH MEETING INFORMATION

The March Division 8 meeting is 2 PM **Saturday March 9** at the Jeffersontown Library, 10635 Watterson Trail, Louisville, KY 40299. To maintain the security of the meeting, the Zoom connection information will be sent directly to members by email about a week prior to the meeting and will not be published online. Bob Frankrone is presenting "Carrie Blast Furnace National Historic Site."

MEMBER WELFARE REPORT

Mike Berry Member Welfare Chairman

Sadly, we are reporting on the sudden passing of one of our members, Don Copley. A donation was made in his name to the family's designated charity. And, as always, please let the Member Welfare committee or one of the Division 8 Board know of any member or family member illness.

MEMBERSHIP REPORT

By Stan White Membership Chairman

As of the last report received from the Mid Central Region, we have 121 active members. There were nine renewals, Charles Cecil, David Cooke, Jim Hall, Robert Irmsher, Kevin Jones, Steve Lasher, Jacob Schiess, Brian Weir, Kent Westphal. Four expireds, Paul Kern, Tyler Dean, Kevin Grimm, Rich Haynes.

CONTEST (Continued from column 1)

Contest dates will also be listed in the Groups.io Calendar. And as always if you have questions, comments, or need help, email

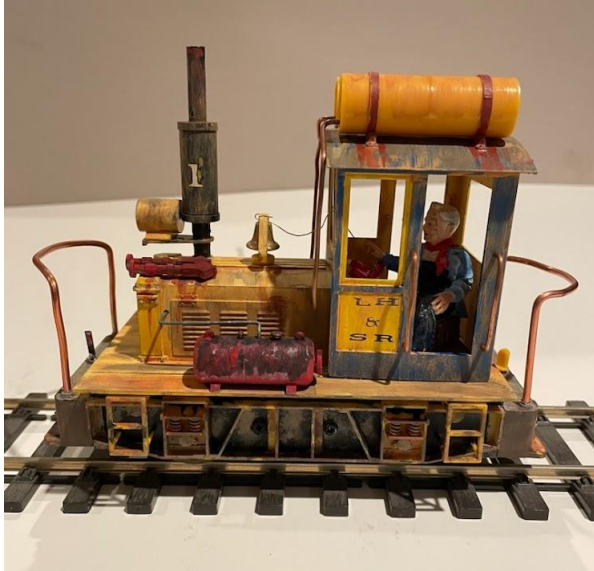
division8.mcr.nmra@gmail.com

We will publish the Contest timeline dates each month in **The Pie Card**.



Left: Rick Maloney was presented with his first place contest certificate by Charlie Keeling Contest Chairman Barry Christensen. See contest photos on page 2 of this issue. (Photo by Barbara Soward)

(See page 5 of this issue for more reports, and the February meeting report.)



FIRST PLACE

Left: Rick Maloney's G-Gauge "LH&SR 18 Ton Plymouth Gas Mechanical Switcher"

Rick began with a model he built from a kit. Rick painted it and lettered it for his Lynn Hauler & Stephanie Run Railroad. He replaced the kit handrails with handrails he made from 18 gauge wire. He also replaced the grab irons with 14-gauge wire. He found an air tank in his scrap box and mounted it on the running board along with piping made from wire. He made a horn from parts that he found in a scrap box and mounted it on the hood. A cord was attached to the bell, and he made gauges and controls for the cab. The piping for the tanks on the roof were made from 14-gauge wire. He weathered everything with thinned paint and added a figure to finish the model.

SECOND PLACE

Right:

Steve Lasher's HO "TH&B GP-7"

Steve added cab window awnings, MU hoses, and a speed recorder cable. Additional wire grabs plus various labels and builder's plates decals were also added. A top of the hood bell was added as per prototype; original bell removed. Light weathering was applied.



THIRD PLACE

Above: Bob Frankrone's HO "SOO Line Diesel #1212"

Bob began with an Athearn undecorated "blue box" GP40-2 kit. He primed the shell with silver paint before painting it in the "candy apple" red Soo Line livery. He applied the appropriate decals, added a snowplow and a red beacon on top of the cab. He then installed the stanchions and handrails and painted them accordingly. Lastly, he weathered the cooling and exhaust fans on the top of the locomotive.

(Continued on page 4)



HONORABLE MENTION

Left: Eric Waggoner's HO "L&N GP-30"

This is an original PROTO 2000 EMD GP-30 that is awaiting a new decoder installation and some weathering.

HONORABLE MENTION

Right: Rick Geerts' HO "C40-8W Union Pacific"

Road number 9375 is a Union Pacific C40-8W Bachmann kit. Detailed by weathering with an air brush. Powders and dust were also applied with a brush then clear coated with Dullcote.



TRACKSIDE WITH BILL LYNCH

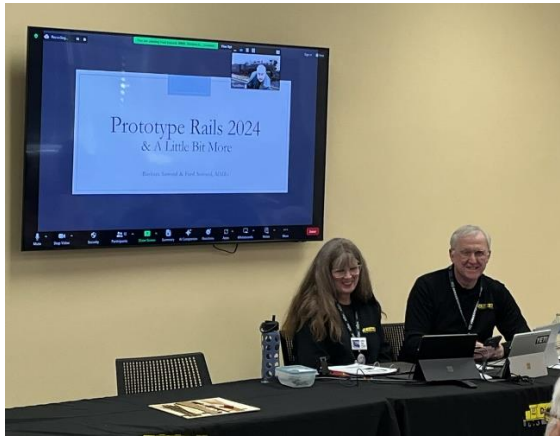
Left and below: Bill found this manifest freight eastbound with two transformer loads behind the engines at Oakland City, IN in November 2023.



FEBRUARY MEETING REPORT

By Bob Dawson, Division 8 Clerk

The February meeting was held at the Jeffersontown Branch of the Louisville Free Public Library on Saturday, February 17, 2024 at 2 PM. This was a Hybrid meeting with members attending in person at the library, and remotely using the Zoom conference platform. All of the officers were present. Attendance was 33, with 27 attending in person and 6 attending on Zoom.



Member Welfare Chairman Mike Berry reported no deaths or hospitalizations in January. Previously reported hospitalizations, John Helton is recovering at home, and Rick Tipton should be home within the week.

Left: Barbara and Fred Soward presenting their program “Prototype Rails & A Little Bit More” at the February meeting. (Photo by Bob Dawson)

Programs and Meetings Chairman Russ Weis reported on upcoming events and programs. Bob Frankrone will provide the program for the March 9 Meeting. “Division 8 Train Day 2024” will be in April in conjunction with the April 13th meeting. Rich Mahaney, North Central Region NMRA President, will be presenting programs in person throughout the day including during the Division meeting. Reservations are required and attendees can preorder a catered box

lunch. (See flyer in this issue for program and registration information).

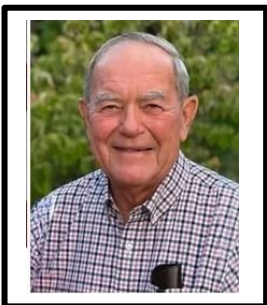
FROM THE ASSISTANT SUPERINTENDENT

By Fred Soward MMR®, Division 8 Assistant Superintendent

Barbara and I spent four days at the two-day Amherst Model Railway Society’s Model Railroad Show in West Springfield, Massachusetts, late last month. Why did we spend four days there when it’s just a two-day show? Because it’s also the location of the Winter NMRA BoD Meetings. The first two days were filled with those meetings. During the two-day event itself, there were multiple small get-togethers, one-on-one meetings, and a full-blown 3-hour Directors-only meeting Sunday morning/afternoon. With over 350,000 square feet in four different buildings filled with hundreds of vendors, I think I was able to spend just over two hours shopping for model railroad stuff and most of that was because we were allowed into the buildings before the doors officially opened. We were invited to operate on two different modular layouts Saturday evening and we visited a home layout Sunday evening. I didn’t pick up a single throttle or help with a single train movement in all that. And I bought just one structure. Barbara bought an airbrush. I think she owns five now. But, after adamantly saying she was NOT going to run a train Saturday evening, she did, and she had a blast doing so!

It was our second year making the trip there. We went last year so that I could sit in on NMRA BoD meetings in anticipation of being elected to the Central District Director position. I’m glad we did that because it gave me a head start on knowing what was happening and how things functioned prior to coming onto the NMRA BoD. It also allowed me to sit in the back of the room and just watch and take notes on interactions between BoD personalities without being an active participant.

If you can take the time to make the trip, I strongly recommend doing so – once. At least once. If I wasn’t on the NMRA BoD, I’d probably not make the trip there again. It’s a FULL day’s travel if we start early in the day and it’s winter in New England, so there’s that. But once, sure! It’s definitely worth the trip to see all the manufacturers up close and personal for a couple of days! (See page 8 for a photo gallery of the Amherst show and the Winter NMRA Board meeting)

IN MEMORIAM

Division 8 and K&I Model Railroad Club member Don Copley passed away unexpectedly on January 20. He was 84 years old. Don was retired from Northwest Orient Airlines where he was a pilot. He served in the U.S. Air Force during the Vietnam Conflict flying transport planes. He is survived by his wife, Patsy Ruth Copley; son, Don Wilson Copley Jr.; daughter, Patricia DeAnn Copley; and his twin sister, LaVon Calkins; and four grandchildren.

ACHIEVEMENT PROGRAM

By Mark Norman MMR®, AP Chairman

I'm taking a few minutes away from the modeling desk to let the paint dry. It's a good time to write a brief column. I'm happy to say a few calls and emails have been received requesting evaluations. It is a joy for all concerned. There is incredible modeling taking place in the division. While not part of my job description, I have to admit it is great fun to visit and learn from my fellow modelers. There will be certificates presented in an upcoming meeting. Keep those calls and emails coming. Have a question? Reach out to your fellow model railroaders and MMRs along with groups.io. The exchange of ideas is noteworthy.

MARCH 2024 MEMBER WELFARE FUND REPORT

The primary purpose of the *Member Welfare Fund* is to provide Division 8 members and their immediate families with get well cards for illness and for sympathy cards and donations on behalf of Division 8 for the death of a relative as defined by the member welfare procedures. And, when you are sick or recovering from a hospital stay, it's nice to hear from friends.

Donations fiscal YTD: Anonymous-\$100; Darcy Elliott-\$25; Eric Waggoner-\$25; Greg Gephart-\$50; John Czerwinski-\$20; Keeling Family-\$200; Kent Westphal-\$50. Thank you!

If you wish to donate, email the amount to division8.mcr.nmra@gmail.com and we'll email you an invoice to pay online. When you pay online, you'll get an immediate receipt of your donation. Or call us at (502) 653-5371 with your donation amount and we'll email you the invoice to pay online. Or use the invoice to send a check.

While a check may seem convenient, online payment saves a trip to the post office and the bank. We are a volunteer staff. So please help us save some of our time which is an increasingly scarce commodity. We need to spend it wisely.

We are a 501(c)(3) Non-profit. Your donation may be tax deductible depending on your own tax situation.

WE NEED DOOR PRIZES AND VOLUNTEERS FOR MARCH TRAIN SHOW & SALE

Do you have two of something? Did you buy something that you found out later doesn't fit your era? Are you generous beyond belief and want to share with others? We can use your new or gently used items in their original packaging for door prizes at the Train Show & Sale on MARCH 16th. Bring something you'd like to select as a door prize if your name was called.

Bring your donation to the Membership Meeting on March 9th. Can't attend the meeting? Bring it to the Show and drop it off at the Door Prize Table. We will announce your generosity during the show! And we'll think the world of you!

If you would like to **volunteer** with the March Train Show & Sale, just email division8.mcr.nmra@gmail.com or call/text (502) 653-5371. We'll acknowledge your commitment by return email, call or text.

We need volunteers the day of the show:

- 07:00 AM to assist our dealers with unloading
- 09:00 AM to assist with various Show tasks during the show
- 03:00 PM to remove any trash from the show and clean the tables

NOTE – If you didn't know, we no longer set up or take down the tables and chairs at the Holy Family Parish Saffin Center. That's now done by Holy Family Parish staff. We just need Division 8 volunteers to help with the 3 tasks above.

If you can give us an hour or two of your time, you'll be giving back to the Model Railroading Hobby. And support Division 8 so we can raise funds for everything we do for our members and the communities we operate in.

See the flyer for the Train Show in this issue.

WHAT'S IN A PHOTO

By Steve Lasher

I ran across this photo the other day looking at an old photo in the December 2003 issue of "Trains" magazine. It's from an article on the Frisco around Springfield, Missouri. It may not say much to many of you, I know, it's just a yard crew doing what yard crews do, but it speaks volumes to me.



**St. Louis-San Francisco Railway photo, Trains Magazine collection.
Used with permission**

first. When they're sure the car is properly spotted and secured, the pin-puller will pull the pin and, after they're all back on the engine they'll head back out.

By the way, when I was a kid, I always thought riding the stirrup and hanging on the car side was pretty neat - that is, until I had to do it in real life. I found out pretty quickly that it's painful - very painful if you have to do it for any length of time. Most of the time the trainmen appreciated it if you ran the engine at a fairly brisk pace. Not so fast that they couldn't get off if necessary but fast enough to minimize the "hang time." One of the many little disillusionments that went by the wayside.

Now for the details. That's quite a "tall drink" of a field man and, pretty young, too. That suggests that it's not a real desirable job since the pin-puller appears quite young as well. As usual, the old heads held the really good jobs.

I always found SFRD reefers quite interesting. As with so many things, the Santa Fe marched to their own drummer. Notice the braces on top of the bunker hatches to keep the hatches from laying over flat on the car and being hard to get to. Nice for the icemen and probably speeded things up.

If you wondered about why the tack boards were up so high it was because if the car was spotted by a loading dock, it would be about eye level from the dock.

Finally, a word about the Frisco's track. Looks pretty darn good to me. Nary a tie-plate out of place or even a loose spike. I got to know the Frisco better when I went to work for the Cotton Belt in Texas and got to be quite fond of it. In steam, their power was actually quite big - check out their 4500 series northerns. A neat little railroad - you could do worse than modeling it.

First of all, if I were guessing, I'd say it's either early spring or late fall. Why? The switchmen have heavy jackets and winter (wool felt) hats on but are working in gloves - suggesting, to me, that it's pretty cool outside but not cold enough for full wintertime rigging.

What else? Well, the pecking order for yard jobs was a foreman and two helpers - usually a field man and pin-puller, in that order. In this case, it's probably the field man riding the lead end of the car with the foreman on the rear stirrup and the pin-puller where he should be, on the engine. The field man will dismount at the door where the car will be spotted and get the car spotted by the door. The foreman will make sure it's spotted correctly and, on his approval, the field man will go high and set the handbrake. If there's air on the car, they'll turn the angle cock between the engine and the car and big-hole the car to set it's brakes

AMHERST MODEL RAILWAY SOCIETY MODEL TRAIN SHOW PHOTO GALLERY

Photos courtesy of Fred Soward



Left: The NMRA Board of Directors held several meetings in the two days before and even during the Springfield Show.



Right: There might've been other Division 8 members who made the trip to Springfield, but Al Goodman was the only one who came by the NMRA booth while Fred & Barbara were there.



Left: This is a partial view of just one of the four buildings that house the Springfield Show. In total, there were nearly 23,000 tickets sold to attend the show. Another 3,500 people were there to support the show as staff, vendors, and volunteers.



Above: Barbara spent several hours working the NMRA booth both days.



Left: Barbara found herself in good hands running an Amtrak train with her coach Mike Rodgers, who just happens to be a 1:1 scale Amtrak conductor. This was despite her being adamant about NOT running a train when the "Dry Hill Model Railroad Club" opened their layout to the Women in Model Railroading (WIMRR) Special Interest Group.



DIVISION 8 TRAIN DAY 2024
SATURDAY APRIL 13, 2024
JEFFERSONTOWN BRANCH LIBRARY

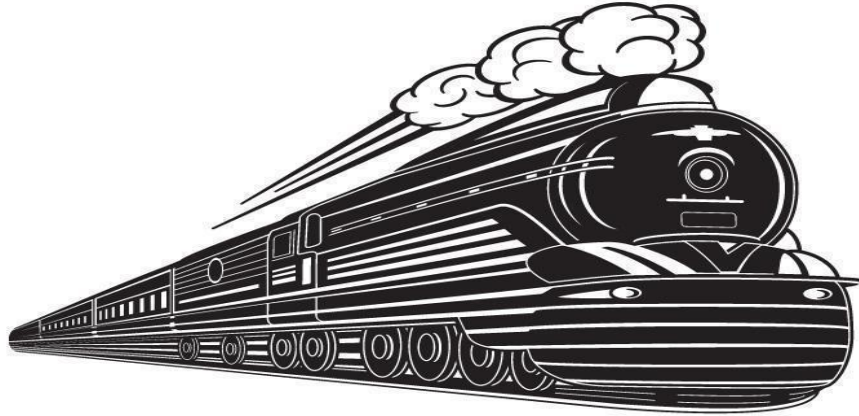
Our presenter for each presentation will be Rich Mahaney. Rich is NMRA North Central Region President and resides in Gobles, Michigan, northwest of Kalamazoo. His background is corporate and plant level loss control, emergency response, hazardous materials, emergency management, and training programs for the past 52 years. And of course, a model railroader.

10:30 TO 11:30	TANK CARS 101 FOR MODEL RAILROADERS
11:30 TO 12:30	LUNCH - BYO or ORDER A BOX LUNCH
12:30 TO 1:30	SELECTING INDUSTRIES FOR YOUR MODEL RAILROAD
1:30 TO 2:00	BREAK + MEET & GREET with RICH MAHANEY
2:00 TO 2:30	DIVISION 8 MEMBERSHIP MEETING
2:30 TO 3:30	TANK CAR INDUSTRIES
3:30 TO 3:45	BREAK
3:45 TO 4:30	IMAGINATION – TECHNIQUES TO FILL IN THE DETAILS
4:30 TO 4:45	FINAL COMMENTS, QUESTIONS & CLEANUP

SEATING IS LIMITED SO SIGN UP TO RESERVE YOUR SEAT FOR THE PRESENTATIONS AND LUNCH USING THIS LINK [OR](#) [DIVISION 8 TRAIN DAY 2024](#)
 SIGN UP FOR ALL 4 PRESENTATIONS OR JUST THE PRESENTATIONS YOU CHOOSE
 AND ORDER A BOX LUNCH FOR \$5.00

PRESENTED BY
 DIVISION 8 MCR NMRA
[EMAIL](#) CALL/TEXT (502) 653-5371 [WEBSITE](#)

TRAIN SHOW & SALE OUR 34TH YEAR



SATURDAY MARCH 16, 2024 10:00 AM to 3:00 PM

HOLY FAMILY PARISH SAFFIN CENTER

3938 POPLAR LEVEL RD, LOUISVILLE, KY 40213

- MODEL TRAINS IN ALL SCALES
- OPERATING LAYOUTS AND DISPLAYS
- RETAIL SALES - OVER 100 DEALER TABLES
- MODEL RAILROAD EDUCATION
- JOIN THE NMRA - NATIONAL MODEL RAILROAD ASSOCIATION
- HOURLY DOOR PRIZES!
- GREAT FOOD & BEVERAGES
- FREE PARKING

\$6.00 PER PERSON – CHILDREN 12 AND UNDER FREE WITH AN ADULT

SPONSORED BY DIVISION 8 - MID CENTRAL REGION - NMRA

FOR MORE INFORMATION VISIT

WEBSITE: <http://div8-mcr-nmra.org>

ADVANCE TICKETS: <https://tinyurl.com/March2024TrainShowTickets>

ADVANCE TICKETS



DEALER INFORMATION



WEBSITE





ROUNDHOUSE ELECTRIC TRAINS
Brownsboro Road Shopping Center
4870 Brownsboro Center
Louisville, KY 40207
(502) 895-2466
SUPPORT YOUR LOCAL HOBBY SHOP
CLICK FOR HOURS & MORE INFORMATION
Roundhouse Electric Trains



UPSCALE HOBBIES
 123 S Indiana Ave
 Sellersburg, IN 47172
 (502) 882-0664
 TUESDAY THRU FRIDAY 10 to 6
 SATURDAY 10 to 5
SUPPORT YOUR LOCAL HOBBY SHOP
CLICK FOR MORE INFORMATION
UpScale Hobbies



SCALE REPRODUCTIONS
 Hikes Point – McMahan Plaza
 3073 Breckenridge Lane
 Louisville, KY 40220
 (502) 459-5849
SUPPORT YOUR LOCAL HOBBY SHOP
CLICK FOR HOURS & MORE INFORMATION
Scale Reproductions

The Mid-Central
 Regional Convention
 May 16-19 2024
 Cleveland, Ohio



Early Registration is \$90.00
 through 12/31/2023



www.northcoastlimited2024.org

Convention Merchandise

The North Coast Limited 2024 Convention offers two Convention Cars and a Large selection of Men & Women's apparel

SCHEDULE of EVENTS

Layout Tours, Operating Sessions, 4 Clinic Rooms (including make & take clinics for a small fee)

Celebration of Modeling, Yard Sale, Prototype Tours, General interest Tours, Non-Rail Tours

More events are being added as the NCL moves closer to the convention date. Look for updates on the NCL site!



Many Restaurants are located within walking distance of the Crowne Plaza Hotel.

Crowne Plaza Hotel

7230 Engle Rd, Middleburg Heights, OH, 44130
 (855)797-6733

EARLY REGISTRATION and MERCHANDISE PRESALE IS NOW OPEN!
 Register or print out a registration form online!



www.northcoastlimited2024.org

See the lineup of layouts that will be open for the convention on the next page.

R & J DETAILS

HO Scale

Model Railroad Detail Parts

Rick Geerts - Owner

Shop the Online Store

R & J Details

THE DEPOT RAILROAD MUSEUM

Part of the John Hay Center
206 S College Ave

Salem, IN 47167

(812) 883-1884

CLICK FOR HOURS & MORE INFORMATION

The Depot Railroad Museum

LOOK AT THE LINEUP OF LAYOUTS TO VISIT!

The Mid-Central
Regional Convention
May 16-19 2024
Cleveland, Ohio



Bram Bailey's Ontario Central Railway. Look for his layout in a future issues of RMC!

RIGHT,
Mark Pekelnicky's
Conrail Toledo Sub
Railroad



LEFT,
John Witt's
Copper Peninsula
Railroad.



ABOVE TOP & BOTTOM,
John Puch's
Union Valley Central



Layout on the web site!

Bram Bailey
John Witt
John Puch
Joe Filiplak
Dave Lawler
Ron Morgan
Ben Lanza
Terry Kolenc

Mark Pekelnicky
Steve Riddlebaugh
Joe Kurilec, MMR®
Paul Novak & Sons
Jim Peters
Jerry Jordak
Cuyahoga Valley &
West Shore Model
Railroad Club.

Check the website, more layouts will be added

www.northcoastlimited2024.org

BELOW, CENTER & RIGHT,
Joe Filiplak's Chessie System Railroad



OFFICERS

Superintendent:	Ron Ellison
Asst. Supt:	Fred Soward
Clerk:	Bob Dawson
Treasurer:	Mike Berry

TRUSTEES

Stan White
Tom Guentner
Russ Weis

COMMITTEE DIRECTORS

Achievement Program	Mark Norman
Contests	Barry Christensen
Librarian	Mike Berry
Membership	Stan White
Member Welfare	Mike Berry
Media	Ron Ellison
Meetings & Programs	Russ Weis
Pie Card	Bob Dawson
Train Show and Sale	Ron Ellison
T-Trak	Bruce DeMaeyer
Webmaster	Fred Soward

MID CENTRAL REGION OFFICERS

President:	Dave Neff
Vice-president:	Jerry Doyle
Secretary:	Bruce DeMaeyer
Treasurer:	John Shields

To contact a Division 8 board member or committee director call or text (502) 653-5371 and tell us your needs. We'll get back to you. To contact Division 8 or any board member or committee director by email use - division8.mcr.nmra@gmail.com

THE PIE CARD

Division 8-MCR-NMRA
Box 189
Eastwood, KY 40018-0189
502-653-5371

Editor: Bob Dawson
Asst. Editor: Rick Tipton
Publisher: Ron Ellison

The Pie Card is published twelve times a year by Division 8 of the National Model Railroad Association, Mid Central Region.

Please address all correspondence to Bob Dawson, Editor, 7305 Ticonderoga Dr., Louisville, KY 40214, or email: dawsobl@aol.com.

Deadline for submission of articles is the 20th day of the previous month. The Pie Card goes to press by the first of each month. Photos are preferred to be a JPEG format. Documents should be submitted as a Word or similar format. No PDF's please.

DIVISION 8 COMPANY STORE IS OPEN FOR BUSINESS



Available:

Division 8 Polo Shirts, T-Shirts, Sweat Shirts, Long Sleeve Denim Shirts, Fleece Jackets, and Baseball Caps
For selections, prices, and order form, go to: div8-mcr-nmra.org and click on "Company Store."



New T-Shirt

DIVISION 8 COMPANY STORE IS OPEN FOR BUSINESS

Shop anytime here - [Division 8 Company Store](#)
CLICK [Division 8 Mid Central Region NMRA](#) or CALL (502) 653-5371 TO ORDER.

And if you have any questions, also click or call. We'll get back to you right away.

Have you noticed . . . The days are getting longer. Spring and summer will soon be here. Look your best at Division 8 Train Day 2024 with a new polo or t-shirt. ACT NOW while you're thinking about it. If you dally, well, we don't want to even go there.