

# The Pie Card

Volume 58, January 2024, Number 1

Mid Central Region, National Model Railroad Association



## FROM THE SUPERINTENDENT'S DESK

By Ron Ellison



Our fate is in your hands. That's another way of reminding you that election of officers takes place in 2024. And it's now 2024. You can read about all the technicality in the Division 8 Bylaws on the website here - [Division 8 Bylaws](#)

The Nominating Committee will report the nominees to the Clerk before the January Membership Meeting on January 20, 2024. The existing slate of officers has agreed to serve another 2-year term, except for the Clerk. Bob Dawson has decided to step down. Rick Maloney has stepped up to serve as Clerk.

Nominees running unopposed may be elected by acclamation at the January Membership Meeting. If you are happy with the direction Division 8 is headed, no action on your part is required. But if you believe your interests are not being served, get involved. You can run for office by contacting the Nominating Committee any time prior to the January 20<sup>th</sup> meeting. If you prefer a less drastic approach, we would love to hear from you anytime. Tell us your ideas. Follow the instructions on the last page of *The Pie Card* to contact Division 8. Your Board of Directors takes the actions they think are best. If we don't hear otherwise from members, we think we're heading in the right direction.

As your Superintendent, I'm asked from time to time how that's going. I tell those who ask, I'm a firefighter. And it's my job to ascertain if I need to build a fire, start a fire, or put out a fire. There's a lot of the latter.

But in mid-December, I received an opportunity to build a fire. Always a nice surprise. Division 8 received an email from Barbara Keeling Fisher. The name Keeling may sound familiar. Like in the Charlie Keeling Model Contest. Barbara is of course Charlie's daughter. The Keeling Family wished to make a \$200.00 donation to the Member Welfare Fund in memory of their father who died on December 13, 2013.

Let me quote from Barbara, also known to some as Charlie Jr. *"I truly cannot believe that it has been 10 years since dad went to run trains in heaven with his other Division 8 buddies. I cherish the time I was able to share in his love for all things train. I do think that he lived as long as he did because he was enjoying the ride so much, he just didn't want to hop off at the 'end of the line'. Thanks to all of you for the great memories that will stay with our family for years to come."*

You will notice the recognition of the donation later in this issue of *The Pie Card* under the Member Welfare report. It was a pleasure to receive this donation in the spirit of giving during the Holidays. Thanks to the Keeling family for their generosity and for the reminder to enjoy your trains with your friends.

And speaking of the Charlie Keeling Monthly Modeling Contest, if you haven't heard, we've just made it easier than ever to enter the Contest with a new simplified entry form. Go here and take a look - [Contest](#) Everything you need to know (Continued on page 2)

## TIME TABLE

**Jan 20**, Sat 2PM, Div 8 Hybrid meeting, Jeffersontown Library and Zoom.

**Jan 28**, Sun, Central Indiana Division Train Show, Lebanon, IN

**Feb 17**, Sat 2PM, Div 8 Hybrid meeting, Jeffersontown Library and Zoom.

**Mar 9**, Sat 2PM, Div 8 Hybrid meeting, Jeffersontown Library and Zoom.

**Mar 9**, Sat, Div 7 Flea Market & Train Show, Lakota West Freshman Campus, West Chester, OH.

**Mar 16**, Sat, Div 8 Train Show & Sale.

**Apr 13**, Sat 2PM, Div 8 Hybrid meeting, Jeffersontown Library and Zoom.

**Apr 13**, Sat 10AM-5PM, Rich Mahaney Day, Jeffersontown Library.

**May 11**, Sat 2PM, Div 8 Hybrid meeting, Jeffersontown Library and Zoom.

**May 16-19**, Thu-Sun, North Coast Limited MCR Convention, Cleveland, OH.

**Jun 8**, Sat 2 PM, Virtual Bull Session

**Jun 15**, Sat 2PM, Div 8 Hybrid meeting, Jeffersontown Library and Zoom.

**Jul 20**, Sat, Div 8 Picnic TBA

## DECEMBER 2023 CHARLIE KEELING HYBRID MODEL CONTEST

By Barry Christensen, Contest Chairman

For December, the 2023-2024 Charlie Keeling Hybrid Model Contest was an all-virtual contest due to having the Christmas Party rather than a meeting. There were five entries in the highway vehicles category. Honorable mention goes to Bruce DeMaeyer for his Montana Log Truck and to Bob Frankrone for his Swift Premium Truck.

Third place goes to Fred Soward for his Olde Frothingslosh 53" Trailers. Second place goes to Rick Geerts for his Electric Company Trucks. First place goes to Rick Maloney for his Truck Mounted Boom Crane. Congratulations to our highway vehicle modelers!

The revised point totals are now: Rick Maloney with 17, Bob Frankrone and Rick Geerts with 10 each, Steve Lasher with 6, Mark Norman and Russ Weis with 5 each, Kevin Jones and Fred Soward with 2 each, and Bruce DeMaeyer, Darcy Elliott, Al Goodman, and Eric Waggoner with 1 each.

The January Contest is **FREIGHT CARS**

We will send out a reminder but below are some of the Contest timeline dates for January:

January 6th - First day to submit entries

January 13th - Last day to submit entries

January 18th - Members will receive the Contest Ballot

January 18th & 19th - Voting in the Contest Ballot ends @ 10:00 PM on the 19th

January 20th - Winners announced at the General Meeting - 1st, 2nd, and 3rd

February 3rd - First day to submit February contest entries,

**NON-STEAM MOTIVE POWER** (Diesel, Electric, Gasoline)

If you need more information, go here - <http://div8-mcr-nmra.org/site/html/contest.html> .

To enter the January Contest, use the **NEW Contest Entry Form** on the Division 8 website here → [Contest](#) and just follow the simple instructions included in the form. Entering the Contest has never been easier.

Contest dates will also be listed in the Groups.io Calendar. And as always if you have questions, comments, or need help, email [division8.mcr.nmra@gmail.com](mailto:division8.mcr.nmra@gmail.com)

We will publish the Contest timeline dates each month in *The Pie Card*.



## JANUARY MEETING INFORMATION

The January Division 8 meeting is 2 PM **Saturday January 20<sup>th</sup>** at the Jeffersontown Library, 10635 Watterson Trail, Louisville, KY 40299. To maintain the security of the meeting, the Zoom connection information will be sent directly to members by email about a week prior to the meeting and will not be published online. Charles Bogart is presenting the program, "A Milk Can Goes to Market." You will follow a milk can as it travels by rail from the farm to the dairy.

## SUPERINTENDENT'S DESK

(Continued from page 2)

about the Contest is accessible from this page. Including links to this and previous years' contests as well as links to Division 8 Google Photos of previous contest entries for this and previous years. This is a wealth of information at your disposal on this web page.

Please join us for the January Membership Meeting on the 20<sup>th</sup> in person or online.

## MEMBER WELFARE REPORT

Mike Berry Member Welfare Chairman

In December a get-well card with an included gift card was sent to Rick Wehr for a recent hospital stay. He is recuperating at home. As always, if you know of any member or their spouse that is hospitalized or has a death in the family, be sure to let the Member Welfare Committee or one of the Board members know.

## MEMBERSHIP REPORT

By Stan White Membership Chairman

As of the last report received from the Mid Central Region, we have 122 active members. We have 4 new members, Greg Heck, Tom Hollis, Steven Linn, and Wyatt Mason with Joe Mason joining as a family member. We have one expired member, Robert Willis. There were 10 renewals, Ed Brennan, Chris Broughton, Bob Dawson, Bruce DeMaeyer, Bob Frankrone, Nathan Lhamon, Bill Roberts, Henry Sanders, Rick Wehr, John Wesson.





**FIRST PLACE**

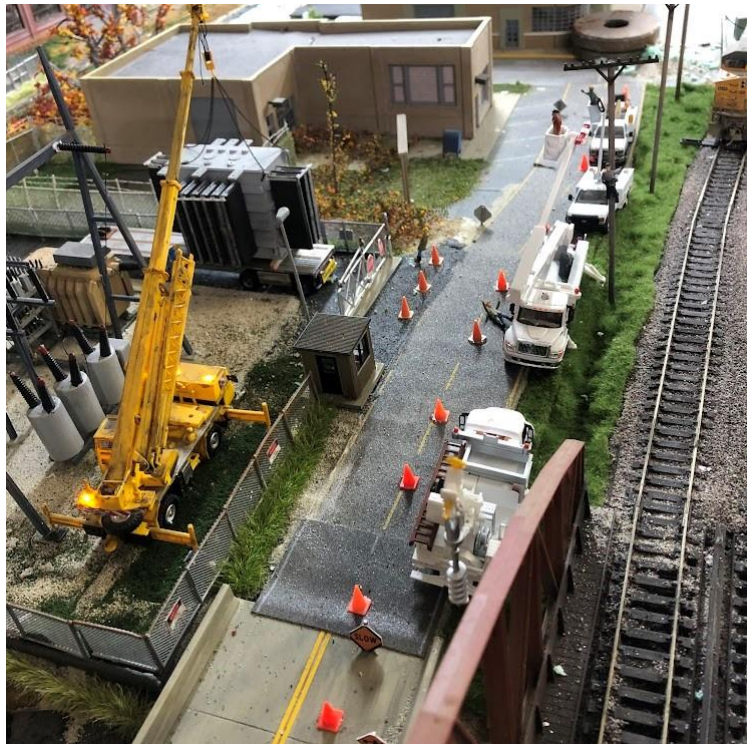
Left: Rick Maloney's "Truck Mounted Boom Crane."

Rick scratch built the truck mounted boom crane in N scale using styrene. It measures 3/4" wide 3-3/4" long and the boom extends 6" out. The outriggers extend out and the crane can be rotated on the truck bed. He painted the model with acrylic paints.

**SECOND PLACE**

Right: Rick Geerts' "Electric Company Trucks"

Rick assembled the crane from a Kibri kit, weathered it, and detailed it with a cable and hook. The trucks are Walthers trucks with warning beacons installed, figures added to the buckets, tools added to beds of trucks, and finally Duke Energy decals added to all of the trucks.



**THIRD PLACE**

Left: Fred Soward's, "Olde Frothingslosh 53' Trailers"

Olde Frothingslosh is a fictitious brewery in the Pittsburgh, PA, area on Bob Weinheimer's Pennsylvania Southern layout. They started as Walthers 53' SceneMaster trailers lettered for Swift. All the paint was stripped from the trailers, then they were repainted Tamiya White. Decals were created from scratch and printed on a color laser printer. The tail lights were painted in as were a few other details. Finally, an overall light wash of grimy black was applied to the trailers.

*(Continued to page 4)*



**DECEMBER CHARLIE KEELING MODEL CONTEST** (Continued from page 3)



**HONORABLE MENTION**

Left: Bruce DeMaeyer's "Montana Log Hauler"

Bruce used a purchased 3D printed log trailer, and an Athearn Day Cab tractor. He made the logs from branches of a lilac tree from his backyard.

**HONORABLE MENTION**

Right: Bob Frankrone's "Swift Premium Truck"

Bob thought this was a "Nice looking truck."



**2023 SILVER SPIKE AWARD**



Congratulations to Stan White, this year's Silver Spike Awardee. The Silver Spike is awarded to a member in recognition of their exemplary service to the NMRA, MCR, Division 8.

Far left: Silver Spike Chairman presenting the award to Stan at the 2023 Division 8 Christmas Party.

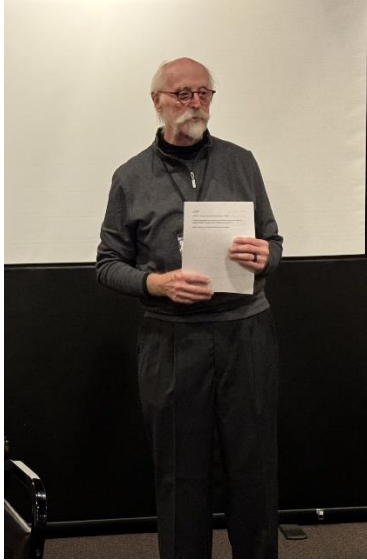
*Photo by Barbara Soward*

See page 5 for pictures from the Christmas Party.

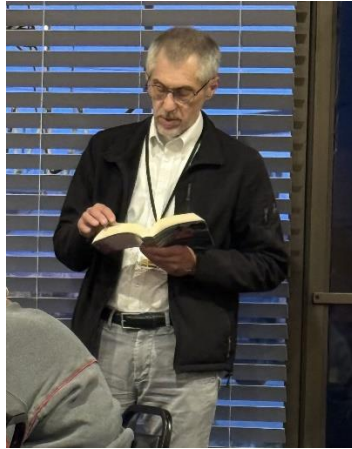


**2023 DIVISION 8 CHRISTMAS PARTY**

Photos by Barbara Soward (with maybe one by Fred Soward)



Left: Superintendent Ron Ellison welcomed everyone to the Party.  
Below: Barry Christensen read a short poem for the season and then provided the blessing.



Photos From the Party.





**CHARITABLE DONATIONS 2023**

*By Mike Berry, Treasurer*

Each year, your Board of Directors, while putting together the budget, allocate funds for charitable donations. This past year we have donated a large screen TV to the Jeffersontown Library and we have now donated \$200 each to the Kentucky Railway Museum and the Salem Depot. All three of these locations we, as a Division, have used and continue to use. The donations are a small way we can pay back to these organizations for their continued hospitality.

**FROM THE ASSISTANT SUPERINTENDENT**

*By Fred Soward MMR®, Division 8 Assistant Superintendent*

I've always been intrigued with 3D printing. And, I've always stayed away from it. Mostly because of the learning curve and partly because of the space it would require in our home. Also, but to a much lesser extent, there's the cost. Yes, I know. The cost has come down substantially. But there's still a cost associated with buying the printer and supplies, then deciding that I should've bought something else and buying a second (third/fourth/insert indefinite number) printer and associated supplies.

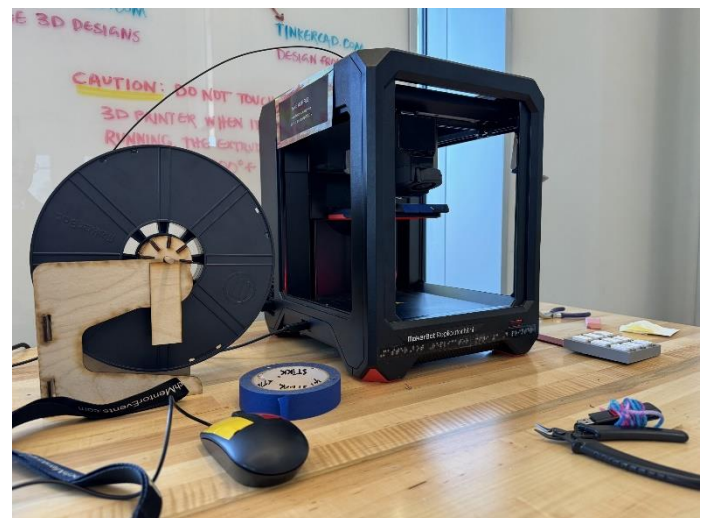
I recently learned about the Louisville Free Public Library's (LFPL) "Maker Space" at the Northeast Regional and the South Central Regional Libraries. Although there are some differences between what you'll find at each, most of the equipment is the same. And, best of all, there's a Makerbot 3D printer at both. There is no cost to LFPL card holders. They even supply the filament at no charge! And, in fact, they won't even allow you to use your own filament. You read that right – you can print 3D projects absolutely for free at the LFPL Maker Spaces.

Some of you are no doubt skeptical and thinking, "What's the catch?" You'll need to sign up for one of their free 60-minute training sessions (Maker Pavilion 101 Orientation) before you can sign-up to use the equipment. You can only sign-up for two two-hour blocks of time per week for a total of four hours per week. If your project is expected to run for more than two hours, you can leave your USB flash drive with the 3D print file (.STL) with the Maker Space staff and they'll print it for you when no one else is using the equipment. Lastly, these are small filament printers. Be thinking small stuff, not G scale locomotives or highly intricate detail pieces.

Barbara & I attended an orientation late November and we had our first 3D printing session just before I sent this column to Bob Dawson. We're extremely pleased with the results. And I'm really happy about the cost! Check out this awesome opportunity for yourself at <https://www.lfpl.org/makerspace>. (See the photos below, photos by Barbara Soward)

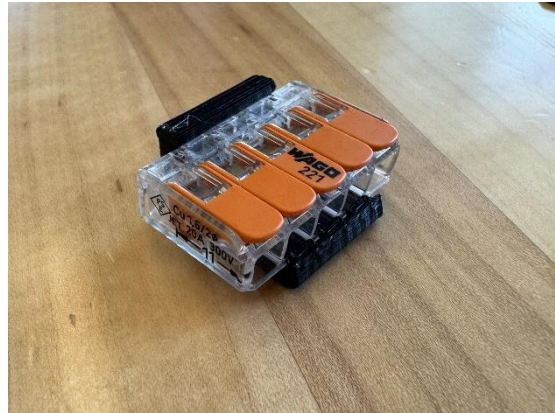
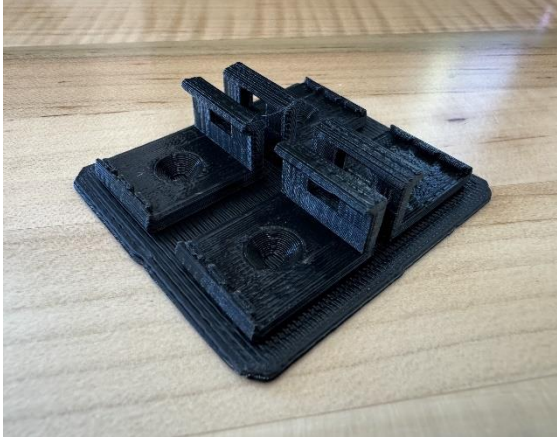


Left:  
Assistant Superintendent Fred Soward keeping watch over the progress of the 3D printer at the Louisville Free Public Library's Northeast Regional Library Maker Space



Right:  
The Maker Bot Replicator Mlni 3D printer at the Louisville Free Public Library's Northeast Regional Library Maker Space

*(Continued to page 7)*



Above left: Fred’s final print job. It’s a set of four Universal Mounts for Wago 221 Electrical Connectors.

Above right: A completed Wago 221 universal Mount, with a 5-connector Wago 221 Electrical Connector in place.

#### **JANUARY 2024 MEMBER WELFARE FUND REPORT**

The primary purpose of the *Member Welfare Fund* is to provide Division 8 members and their immediate families with get well cards for illness and for sympathy cards and donations on behalf of Division 8 for the death of a relative as defined by the member welfare procedures. And, when you are sick or recovering from a hospital stay, it’s nice to hear from friends.

Donations fiscal YTD: Anonymous-\$100; Darcy Elliott-\$25; John Czerwinski-\$20; Keeling Family-\$200; Kent Westphal-\$50. Thank you!

If you wish to donate, email the amount to [division8.mcr.nmra@gmail.com](mailto:division8.mcr.nmra@gmail.com) and we’ll email you an invoice to pay online. When you pay online, you’ll get an immediate receipt of your donation. Or call us at (502) 653-5371 with your donation amount and we’ll email you the invoice to pay online. Or use the invoice to send a check.

While a check may seem convenient, online payment saves a trip to the post office and the bank. We are a volunteer staff. So please help us save some of our time which is an increasingly scarce commodity. We need to spend it wisely.

We are a 501(c)(3) Non-profit. Your donation may be tax deductible depending on your own tax situation.

#### **ACHIEVEMENT PROGRAM**

*By Mark Norman MMR®, AP Chairman*

A new year has begun and we are between the Fall and Spring Train Shows. In addition are the layouts at the Greentree Mall, K&I Club and others. The Fall show brings in not only the regulars but also the curious. Many of these people find themselves at the local hobby shops buying their first trainset or bringing their childhood set out of storage. This is a great opportunity for us. More often than not, their enthusiasm is met with obstacles – oxidized brass track, lubricants that have thickened after decades, gears jammed with dog and cat hair, etc. Fortunately, these people will remember us and reach out for help. This is a great way to continue giving to the community and bringing more members into the hobby. Of course, many people find their trains run just fine on a table and enjoy seeing the trains going round and round. Sooner or later, they too start have questions, usually along the lines of “Is this all there is to this?” Of course not! Just ask us. We have much to offer.

#### **IN MEMORIAM RAY GROSSER**

Ray Grosser passed away November 19, 2023. He was 83 years old. Ray, and his wife Renee, hosted Division 8 on several visits to their home and train layouts in Eubank, KY. “Train layouts” is the best term to describe what Ray and Renee accomplished in Model Railroading. Their HO layout was a work of art. The O Scale layout that replaced it was the same. In later years the Grosser’s also had a live steam layout.



**WHAT GOOD ARE SHELVES?**

*By Russ Weis – Photos by Fred Soward MMR®*

For starters we have to have shelves to hold all of our railroad books and magazines we've accrued over the years. And how about the shelves in our work room to hold the many cars we told ourselves we're going to build, or weather? So, what about our layouts?

Now-a-days most layout owners want to do some kind of operating (ops) sessions, and without having a place to hold your paperwork takes some of the fun out of the session, at least for me.

I did an ops session on the West Coast where I had my throttle, a communication device, and my switch list to juggle and no place to set any of it down. The layout owner had some nice scenery and I didn't want to damage any, so what's a guy supposed to do? Some shelves would have been nice.

In my opinion if you are going to do ops on your layout it's a must to have some type of shelf, or ledge for your operators to put things, like throttles and paperwork on. After all, you worked hard to get all that scenery looking just right, and what a shame to have one of your guests lay a clipboard, or throttle on it and ruin it.

Okay you like that idea, but you have narrow aisle ways and a shelf would stick out too far. I've been to some layouts where the owner installed collapsible shelves so when you arrive at the area where you are going to do some switching, you pull up on the shelf and it locks in place. When you're done with your moves, you push the shelf down and off you go.



Above: Stan White on Russ' layout, is checking his paper work (car cards). Note the cards, pencil, and uncoupling tool on the shelf

I've also seen shelves that pull out like a drawer for those narrow passages which makes it very convenient to lay paperwork, or throttles on while you're doing the assigned work.

One time I was doing ops on a layout that had no shelves and while I was waiting for my train to depart, I observed a fellow operator put his clipboard on the layout and break a road sign - YIKES!

I've been invited to do an ops session on a layout I have not been to before and the owner sent out some dos and don'ts about his layout. One of the don'ts was don't put paperwork or waybills on the layout - use the shelves. So, it's just not me who thinks shelves are a good idea and wants his operators to use them.

So, if you want to keep your layout damage free, plus give your operators a convenient spot to place their equipment, consider adding some shelves. It may be a little work, but in the long run you'll be happy you did.

Right:

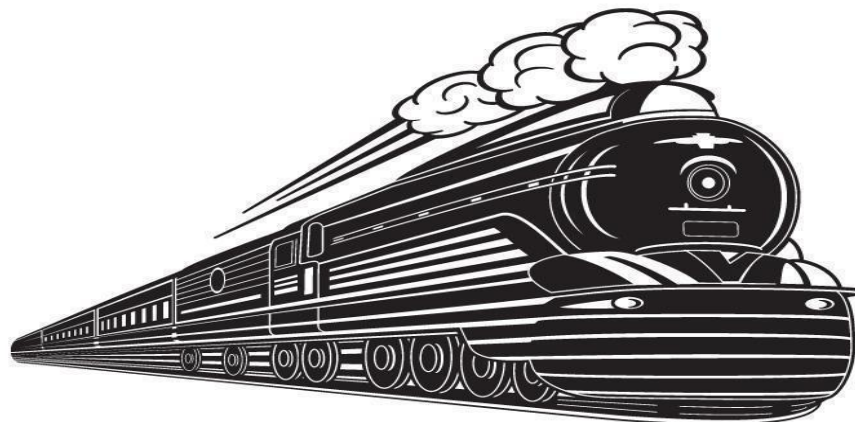
Kent Westphal using a shelf at the Buffalo Passenger Station to hold his orders and sort his car cards.





# TRAIN SHOW & SALE

## OUR 34TH YEAR



**SATURDAY MARCH 16, 2024 10:00 AM to 3:00 PM**

**HOLY FAMILY PARISH SAFFIN CENTER**

**3938 POPLAR LEVEL RD, LOUISVILLE, KY 40213**

- MODEL TRAINS IN ALL SCALES
- OPERATING LAYOUTS AND DISPLAYS
- RETAIL SALES - OVER 100 DEALER TABLES
- MODEL RAILROAD EDUCATION
- JOIN THE NMRA - NATIONAL MODEL RAILROAD ASSOCIATION
- HOURLY DOOR PRIZES!
- GREAT FOOD & BEVERAGES
- FREE PARKING

**\$6.00 PER PERSON – CHILDREN 12 AND UNDER FREE WITH AN ADULT**

**SPONSORED BY DIVISION 8 - MID CENTRAL REGION - NMRA**

FOR MORE INFORMATION VISIT

WEBSITE: <http://div8-mcr-nmra.org>

ADVANCE TICKETS: <https://tinyurl.com/March2024TrainShowTickets>

ADVANCE TICKETS



DEALER INFORMATION



WEBSITE





**ROUNDHOUSE ELECTRIC TRAINS**  
**Brownsboro Road Shopping Center**  
**4870 Brownsboro Center**  
**Louisville, KY 40207**  
**(502) 895-2466**  
**SUPPORT YOUR LOCAL HOBBY SHOP**  
**CLICK FOR HOURS & MORE INFORMATION**  
[Roundhouse Electric Trains](http://Roundhouse Electric Trains)



**UPSCALE HOBBIES**  
 123 S Indiana Ave  
 Sellersburg, IN 47172  
 (502) 882-0664  
 TUESDAY THRU FRIDAY 10 to 6  
 SATURDAY 10 to 5  
 SUPPORT YOUR LOCAL HOBBY SHOP  
 CLICK FOR MORE INFORMATION  
[UpScale Hobbies](http://UpScale Hobbies)



**SCALE REPRODUCTIONS**  
 Hikes Point – McMahan Plaza  
 3073 Breckenridge Lane  
 Louisville, KY 40220  
 (502) 459-5849  
 SUPPORT YOUR LOCAL HOBBY SHOP  
 CLICK FOR HOURS & MORE INFORMATION  
[Scale Reproductions](http://Scale Reproductions)

The Mid-Central  
 Regional Convention  
 May 16-19 2024  
 Cleveland, Ohio



Early Registration is \$90.00  
 through 12/31/2023



[www.northcoastlimited2024.org](http://www.northcoastlimited2024.org)

*Convention Merchandise*

*The North Coast Limited 2024 Convention offers two  
 Convention Cars and a Large selection of Men & Women's  
 apparel*

*SCHEDULE of EVENTS*

*Layout Tours, Operating Sessions, 4 Clinic Rooms  
 (including make & take clinics for a small fee)*

*Celebration of Modeling, Yard Sale, Prototype Tours, General interest Tours,  
 Non-Rail Tours*

*More events are being added as the NCL moves closer to the convention date.  
 Look for updates on the NCL site!*



*Many Restaurants  
 are located  
 within walking  
 distance of the  
 Crown Plaza  
 Hotel.*

**Crowne Plaza Hotel**

7230 Engle Rd, Middleburg Heights, OH, 44130  
 (855)797-6733

[www.northcoastlimited2024.org](http://www.northcoastlimited2024.org)



**EARLY REGISTRATION  
 and MERCHANDISE PRESALE  
 IS NOW OPEN!**

*Register or print out  
 a registration form  
 online!*

**R & J DETAILS**  
**HO Scale**  
**Model Railroad Detail Parts**

**Rick Geerts - Owner**

**Shop the Online Store**

[R & J Details](http://R & J Details)

**THE DEPOT RAILROAD  
 MUSEUM**

**Part of the John Hay Center**  
**206 S College Ave**

**Salem, IN 47167**

**(812) 883-1884**

**CLICK FOR HOURS & MORE INFORMATION**

[The Depot Railroad Museum](http://The Depot Railroad Museum)



**Division 8, MCR, NMRA**

<http://div8-mcr-nmra.org/>

**OFFICERS**

Superintendent: Ron Ellison  
 Asst. Supt: Fred Soward  
 Clerk: Bob Dawson  
 Treasurer: Mike Berry

**TRUSTEES**

Stan White  
 Tom Guenther  
 Russ Weis

**COMMITTEE DIRECTORS**

Achievement Program Mark Norman  
 Contests Barry Christensen  
 Librarian Mike Berry  
 Membership Stan White  
 Member Welfare Mike Berry  
 Media Ron Ellison  
 Meetings & Programs Russ Weis  
 Pie Card Bob Dawson  
 Train Show and Sale Ron Ellison  
 T-Trak Bruce DeMaeyer  
 Webmaster Fred Soward

**MID CENTRAL REGION OFFICERS**

President: Dave Neff  
 Vice-president: Jerry Doyle  
 Secretary: Bruce DeMaeyer  
 Treasurer: John Shields

To contact a Division 8 board member or committee director call or text (502) 653-5371 and tell us your needs. We'll get back to you. To contact Division 8 or any board member or committee director by email use - [division8.mcr.nmra@gmail.com](mailto:division8.mcr.nmra@gmail.com)

**THE PIE CARD**

Division 8-MCR-NMRA  
 Box 189  
 Eastwood, KY 40018-0189  
 502-653-5371

Editor: Bob Dawson  
 Asst. Editor: Rick Tipton  
 Publisher: Ron Ellison

The Pie Card is published twelve times a year by Division 8 of the National Model Railroad Association, Mid Central Region.

Please address all correspondence to Bob Dawson, Editor, 7305 Ticonderoga Dr., Louisville, KY 40214, or email: [dawsobl@aol.com](mailto:dawsobl@aol.com).

Deadline for submission of articles is the 20<sup>th</sup> day of the previous month. The Pie Card goes to press by the first of each month. Photos are preferred to be a JPEG format. Documents should be submitted as a Word or similar format. No PDF's please.

**DIVISION 8 COMPANY STORE IS OPEN FOR BUSINESS**



**Available:**

Division 8 Polo Shirts, T-Shirts, Sweat Shirts, Long Sleeve Denim Shirts, Fleece Jackets, and Baseball Caps  
 For selections, prices, and order form, go to: [div8-mcr-nmra.org](http://div8-mcr-nmra.org) and click on "Company Store."



New T-Shirt

**DIVISION 8 COMPANY STORE IS OPEN FOR BUSINESS**

Shop anytime here - [Division 8 Company Store](http://Division 8 Company Store)  
**CLICK [Division 8 Mid Central Region NMRA](http://Division 8 Mid Central Region NMRA) or CALL (502) 653-5371 TO ORDER.**

Shop anytime here - [Division 8 Company Store](http://Division 8 Company Store)  
**CLICK [Division 8 Mid Central Region NMRA](http://Division 8 Mid Central Region NMRA) or CALL (502) 653-5371 TO ORDER.**

And if you have any questions, also click or call. We'll get back to you right away.

Did Santa miss your house? Did you stop to think there might be a reason Santa missed your house? You can correct that by first being nicer. And then reward your goodness with a gift to yourself of some Division 8 duds. We have it all. Short sleeves, long sleeves, t-shirts, sweatshirts, fleece. Act NOW. If you order today, we might make the January 20th meeting. If you dally, it will stretch into February or you can pay some postage and get more immediate gratification.