

# The Pie Card

Volume 58, December 2024, Number 12

Mid Central Region, National Model Railroad Association



## FROM THE SUPERINTENDENT'S DESK

By Ron Ellison



It's that time of year again. It seems like it was just here. It was – but then again; it's been 12 months. The Division 8 Train Show & Sale is over, and the Christmas Party is just ahead. Time to think about what we are thankful for, say some thank yous, and review what we've accomplished this year.

First the Train Show. It was another barn burner. As I write this, the financial report is still coming together. But we know the attendance was another record for us. We'll have a full reporting at our next Membership Meeting on January 18th. We had 50 more attendees than at the Spring Show, which was also a record. And we had more participation from members as staff, and members as Club and Layout volunteers. For that, I thank our members profusely.

For the core volunteers who produce the Show, it can sometimes feel like a thankless job. But there are always good things that come with all the work. One attendee wrote in the Comments section of a door prize card, "I love a model train city! Brings me joy to visit a train show." To me, that's why I do this. To bring joy by sharing model trains. And you don't have to be a hobbyist to feel the joy! Model Trains make people happy. Especially around the holidays. Enjoy yours!

Thank you to all the Division 8 members who volunteered at the Show. We sent Show Staff a thank you note. And if you were with a Club or Layout, we asked your leader to forward a copy of that same thank you note. We hope you received the message that we are grateful for your time!

The Division 8 Christmas Party is this coming Saturday, December 7th. A few tickets should still be available but today at midnight is the last day to purchase a ticket – there's a link later in *The Pie Card*. It's the Model Railroading social event of the season. We gather at 4:30 to socialize with a buffet dinner at 5:30 followed by a short program reviewing 2024 at Division 8. Many members are bringing their spouses who we often only see at the Christmas Party. We look forward to seeing everyone. Don't forget your badge so spouses will know who you have been talking about all year.

Finally, membership in Division 8 increased in 2024. We started the year with 120 members. We won't receive the end of December report from NMRA HQ until early February. But as of September 30th, we are 132. We know of 2 new members joining in November. And the Southern Indiana Railroad Club has voted to become a 100% NMRA Club. Some SIR's are already NMRA members but some more will join. SIR will be the only 100% NMRA Club in Indiana and of course the 2nd 100% Division 8 Club along with the K & I.

We're going to start 2025 strong. Get ready for the Spring Train Show & Sale on March 15th, the Mid Central Region Convention in Columbus, Ohio in mid-May and the National Convention in Novi, Michigan in mid-July, the 90th Anniversary celebration of the NMRA on Labor Day weekend. And much, much more.

## TIME TABLE

**Dec 7, Sat**, Div 8 Christmas Party, Corner Café, Lyndon, KY.

**Dec 28, Sat 5PM**, NMRAX, Virtual YouTube & Facebook.

**Jan 18, Sat 2PM**, Div 8 Hybrid meeting, Jeffersontown Library and Zoom.

**Jan 18, Sat**, NMRAX, Virtual YouTube & Facebook.

**Feb 15, Sat 2PM**, Div 8 Hybrid meeting, Jeffersontown Library and Zoom.

**Feb 22**, NMRAX, Virtual YouTube & Facebook.

**Mar 8, Sat 2PM**, Div 8 Hybrid meeting, Jeffersontown Library and Zoom.\*

**Mar 15, Sat 10AM-3PM**, Div 8 Train Show and Sale, Safin Center, Holy Family Parish.

**Mar 22**, NMRAX, Virtual YouTube & Facebook.

**Apr 12, Sat 2PM**, Div 8 Hybrid meeting, Jeffersontown Library and Zoom.\*

**Apr 26**, NMRAX, Virtual YouTube & Facebook.

*\*March and April meetings are on the second Saturdays of the month.*

## DECEMBER 2024 CHARLIE KEELING HYBRID MODEL CONTEST

By Barry Christensen, Contest Chairman

December	Highway vehicles
January	Freight cars
February	Non-steam motive power
March	Structures
April	Passenger cars
May	Cabooses
June	Open loads
July	NO CONTEST
August	MOW equipment
September	Photos (model) and photos (prototype)
October	Steam locomotives
November	Displays (no size limit)

For November, the 2024-2025 Charlie Keeling Hybrid Model Contest had five entries in the displays category, no size limit. Displays can include modules, dioramas and any scenes in a layout that previously have been a separate display. One of this month's entries had won first place in this category during a previous model contest year so it was disqualified per our new contest rule #4.

Honorable mention goes to Rick Maloney for Skovby Sand Co. and to Barbara Soward for The Boxcar Children. Third place goes to Fred Soward for Neighborhood Picnic. Second place goes to Paul Downs for Butchertown. First place goes to Bob Kuchler for T-track Country Store. Congratulations to our display builders!

The revised point totals are now: Bob Frankrone with 9; Russ Weis with 8; Steve Lasher with 7; Rick Maloney with 5; Bruce DeMaeyer, Bob Kuchler and Eric Waggoner with 4 each; Paul Downs with 3; Al Goodman and Fred Soward with 2 each; and George Ronn and Barbara Soward with 1 each.

The December Contest is all virtual and the category is **HIGHWAY VEHICLES**.

We will send out a reminder but below are some of the Contest timeline dates for December:

- December 7th - First day to submit entries
- December 14th - Last day to submit entries
- December 19th - Members will receive the Contest Ballot
- December 19th & 20th - Voting in the Contest Ballot ends @ 10:00 PM on the 20th
- December 21st - Winners announced online by email - 1st, 2nd and 3rd
- January 4th - First day to submit January contest entries **FREIGHT CARS**

(continued to column 2)



### NO MEETING IN DECEMBER-CHRISTMAS PARTY

The January Division 8 meeting is 2 PM **Saturday January 18, 2025** at the Jeffersontown Library, 10635 Watterson Trail, Louisville, KY 40299. To maintain the security of the meeting, the Zoom connection information will be sent directly to members by email about a week prior to the meeting and will not be published online. Charlie Buccola is presenting, "Railway Preservation from Full Scale to Model to the Printed Word"

### CONTEST (continued from column 1)

If you need more information, go here - <http://div8-mcr-nmra.org/site/html/contest.html>.

To enter the December Contest, use the **Contest Entry Form** on the Division 8 website here → [Contest](#) and just follow the simple instructions included in the form. Entering the Contest has never been easier.

Contest dates will also be listed in the Groups.io Calendar. And as always if you have questions, comments, or need help, email [division8.mcr.nmra@gmail.com](mailto:division8.mcr.nmra@gmail.com)

We will publish the Contest timeline dates each month in **The Pie Card**.

### MEMBER WELFARE

By Mike Berry Member Welfare Chairman

We have three of our members on our list this month: Steve Lasher had shoulder surgery, spent a night or two in the hospital and is home recuperating. Bob Frankrone had a hip replacement as outpatient surgery and is likewise home getting better. Both gentlemen received get-well cards from the Division and Steve also received a \$25 gift card because of his overnight stay.

On another note, we want to report that Mark Hedge is now in a nursing home due to receiving dialysis 3 times a week. Give him a call when you can.

The Member Welfare Fund fiscal year donations remain - Anonymous-\$100; Charlie Keeling family-\$200.

And don't forget to keep us posted on any other members in need.





**FIRST PLACE:** Bob Kuchler's "T-TRAK COUNTRY STORE"

Left:

This is a double N Scale T-TRAK module with a number of buildings highly modified and partially scratch built. Many details throughout including hand painted figures and vehicles. Most appropriate details are visible including power lines to the buildings, signage and weathering of buildings and roads. The land is contoured and covered with many scenery materials. There are workers in the ice cream shop and many small details to complete the scene.

**SECOND PLACE:** Paul Downs' "BUTCHERTOWN"

Right:

A detail from Paul's N Scale Diorama. It includes scratch-built stockyards, elevated railroad viaduct, "shotgun" and "camelback" houses. He used styrene for construction. Many details are scratch built, including electrical meters, fencing, mailboxes.



**THIRD PLACE:** Fred Soward's HO "NEIGHBORHOOD PICNIC"

Left: This was built several years ago for the "Division 8 Superintendent's 1x1 Boxcar Challenge." The intent was to create a fun display with several mini-scenes. The boxcar is embedded upside down into the middle of the foam, creating a swimming pool for the picnic attendees. The ground cover is a mix of several manufacturer's grass/ground foam/dirt/ballast products. The trees and bushes are also a mix of several manufacturer's products with additional ground foam and foliage applied. The Classic Metal Works truck received a back roads treatment of mud and grime.

*(continued to next page)*



**NOVEMBER CHARLIE KEELING MODEL CONTEST** (continued from page 3)

**HONORABLE MENTION**



Left:

Barbara Soward's HO "THE BOXCAR CHILDREN"

Right:

Rick Maloney's N Scale "SKOVBY SAND CO."



Left: "Show and Tell" table at the November Meeting.

Photo by Bob Dawson

**NOVEMBER MEETING REPORT**

*By Rick Maloney MMR®, Division 8 Clerk*

The Division 8 November Meeting was held on Saturday November 9, 2024. It was a hybrid meeting with 24 members in person, 6 members on Zoom, and 2 guests present. The meeting was called to order at 2:00 and over at 4:12. Ron welcomed our 3 new members and our guests before reminding everyone to sign the volunteers sheet for the upcoming show. We learned that two of our members had been hospitalized but were now recovering at home. AP Chairman Mark Norman MMR® presented Cecil Stewart with four merit award certificates for "cars" and presented Stan White with a merit award for "structures." Congratulations to Bob Kuchler who took first place in the November Contest. Darcy Elliott told us about Trains at the Tree Christmas show at the Green Tree Mall running November 29th through December 15th. He said that Division Members can sign up for time slots if they are interested in running trains or just helping out. The business portion of the meeting was followed by Fred Soward's presentation and demonstration on building turnouts using Fast Tracks tools (right). *Photo by Barbara Soward*





**DIVISION 8 FALL 2024 TRAIN SHOW AND SALE**

Here are some photos from our November 16 Fall Train Show and Sale. Photos were taken by Theresa Berry and Barbara Soward.

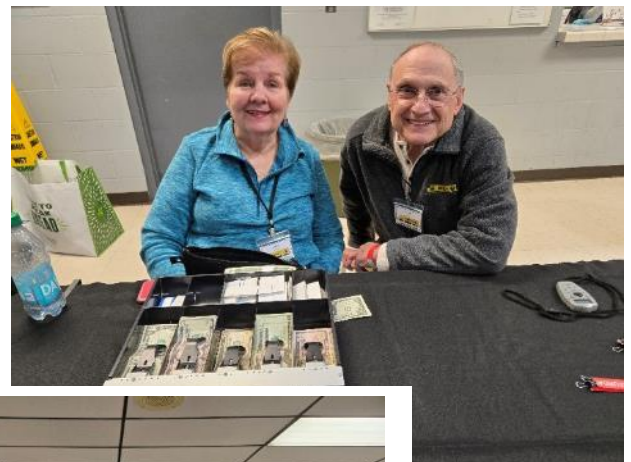
*Photos by Theresa Berry:*



Left:

Two wild and crazy  
"Bobs."

Below:  
Mike on TV!



*(continued on next page)*



**DIVISION 8 FALL 2024 TRAIN SHOW AND SALE** (continued from page 5)

Photos by Barbara Soward



Left: Contest Chairman Barry Christensen presented Bob Kuchler (left) with his first place model contest certificate from the November Division 8 meeting.



**FROM THE ASSISTANT SUPERINTENDENT**

*By Fred Soward MMR®, Division 8 Assistant Superintendent*

Other than our own Division 8 Train Show & Sale, there wasn't any layout visiting or train shopping for us this month. Just too much on the calendar to make that happen. With many thanks to Ron Ellison and Russ Weis for their help, we did, however, make quite a bit of progress with the layout in our basement.

In last month's column, when writing about the layout, I suggested we might make it into Santa Cruz with the sub-roadbed before Thanksgiving. We reached that milestone almost two weeks earlier than we'd hoped. So, now it's time to start laying down homabed from Watsonville Junction into Santa Cruz and putting in track in Watsonville Junction Yard. We'll probably put three temporary bridges in place so we can run trains beyond the yard becuz I know it's going to be quite a while before I get the final bridges in place (one kit-built girder bridge and two scratch built wood trestles).

Since I made the announcement last month, I've had a few people sign up for next year's visits to Bob Weinheimer's Pennsylvania Southern model railroad in Charleston, WV. If you're at all interested, I suggest you reach out to me very soon as several of the seats for the 2025 trips are already filled.

Lastly, the offer I made during the "Building Turnouts with Fast Tracks Tools" presentation during the November 2024 Division 8 meeting still stands. I'm available to coach any Division 8 member through the requirement to scratch build the three pieces of track work. I'll have all the tools, equipment, and supplies available for you to use at my home. Just contact me directly to set it up and we'll make it happen. All I ask is that you reimburse me for the cost of the materials (\$6.00 for a single turnout/\$30.00 for all three pieces of trackwork – the equivalent of making 5 individual turnouts).

**MEMBERSHIP REPORT**

*By Stan White, Membership Relations Chairman*

As of the last report received from the Mid Central Region, we have 131 active members. We had three new members (George Williamson, James Feeney II, Sean Britt). We had twelve renewals (Chris Broughton, Bruce DeMaeyer, Wesley Gardner, Al Goodman, Duke Green, Greg Heck, Natalie McKee, Tyler McKee, Paul Sturgeon, Debora Sturgeon, Richard Wehr). One expired member (Kenneth Pettit).

**ACHIEVEMENT PROGRAM**

*By Mark Norman MMR®, Achievement Program Chairman*

There has been an uptick in Achievement Program submissions of late. It is a pleasure to see the incredible modeling being done. It never ceases to amaze me how talented we are as individuals and as a group. We learn from one another. As an example, after our November business meeting Rick Maloney and I were evaluating Stan White's Modern Concrete Bridge. It is truly a well thought out and executed model. New member Jackson Thomas asked if he could observe and participate. Of course! Everyone is welcome. Besides, younger eyes see better than older ones. He was provided with the appropriate evaluation matrix referred to in last month's column. He closely observed what the two 'old hands' were evaluating and how we determined the scores to be given in each of the categories. The process was interactive and cooperative. The reasoning was explained to Stan who seemed satisfied. Jackson took the time to sign the paperwork also. Officially, he is an 'evaluator in training' while he gains more experience. Permit me to mimick the cheesy TV ads. Wait, there's more! He took his enthusiasm to the Southern Indiana Club and advocated for joining the NMRA – which they did. He brought his mother to the Train Show and introduced her to Stan who built the bridge and myself who helped in the evaluation. Please thank and congratulate all parties for making this happen. That was just one of many wonderful things that happened at the Train Show.

Left:

AP Chairman Mark Norman MMR® presented Cecil Stewart (center) with four Merit Awards "Cars" category for four passenger car models he submitted.

Cecil's wife, Brenda, assisted in holding his certificates.

*Photo by Barbara Soward*







# 2024 Christmas Party

**Saturday December 7, 2024**

**Gather @ 4:30 ~ Buffet Dinner @ 5:30  
\$15 per person**



**9307 New La Grange Rd  
Louisville, KY 40242**

MAP LINK [CORNER CAFE](#)

**A brief program ~ 2024 YEAR IN REVIEW**  
Will be presented after dinner

**You can pay online by clicking the button or using the QR Code**

**BUY NOW**





**WEST VIRGINIA LAYOUTS**

*By Fred Soward MMR®, photos by the author*

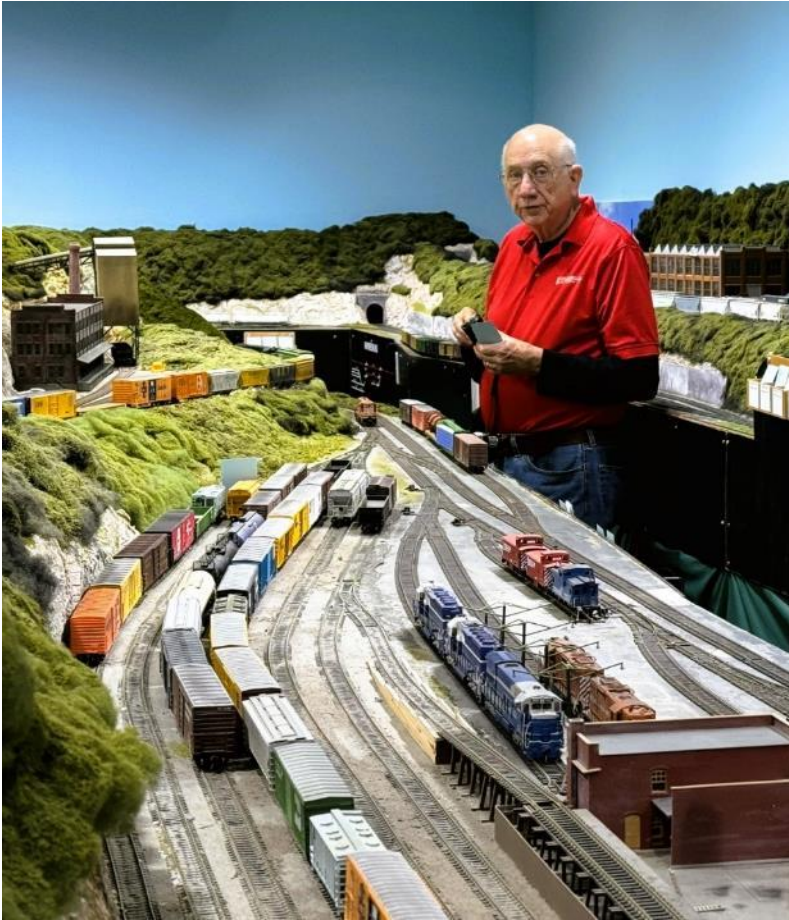
Three Division 8 members, Bob Dawson, Fred Soward MMR®, and Eric Waggoner, took a three-day trip to Charleston, WV, to operate on Bob Weinheimer's MMR® HO scale Pennsylvania Southern model railroad. The layout is a proto-freelance railroad set in 1980, running north and south from just above Pittsburgh, PA, to Chattanooga, TN. The modeled portion of the layout is the northern division of the railroad. Bob started building the layout when he lived in Louisville and was a member of Division 8 in the 1980's. Bob and the layout have since moved to Pennsylvania and now West Virginia. The group also took a detour on the way home, visiting David Oliverio's N scale B&O layout.



Above; Eric Waggoner is running a train through Bridgeville while Bob Weinheimer MMR® pulls duty as the conductor on the Pennsylvania Southern. Below: Fred Soward MMR® works the Pittsburgh yard, which is the primary classification yard on the on the Pennsylvania Southern layout.



*(continued on next page)*

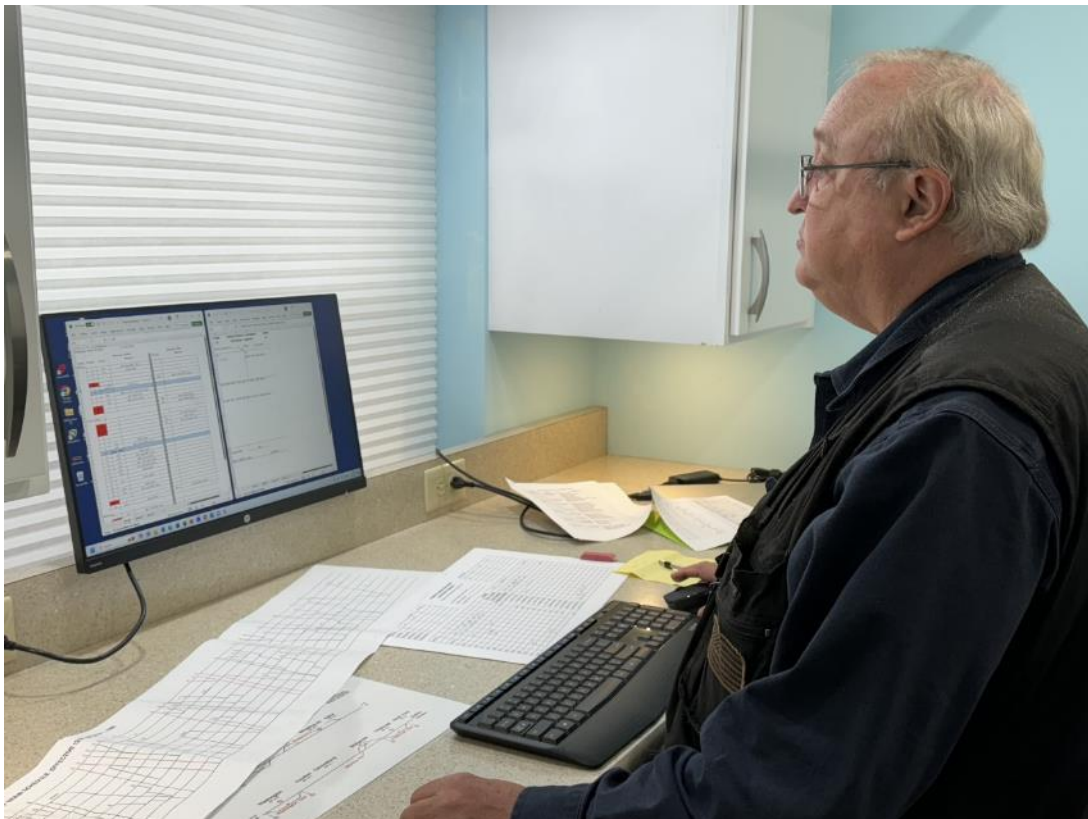


Left:

Bob Dawson is running a train up the grade past the Canonsburg sidings, overlooking the Washington yard on the Pennsylvania Southern.

Below:

Eric Waggoner racking up hours as the Dispatcher on the Pennsylvania Southern.







Above: Bob Dawson and David Oliverio posing for a picture near the entrance to David's B&O layout while Bob Weinheimer MMR® and Eric Waggoner take a look at the layout in the background. The layout sits on top of some mighty fine looking cabinetry.

Below: One of several coal dumps on David's B&O layout.







Above: Local power at one of the coal mines on David's B&O layout.

Below: One of several coal mines on David's B&O layout.

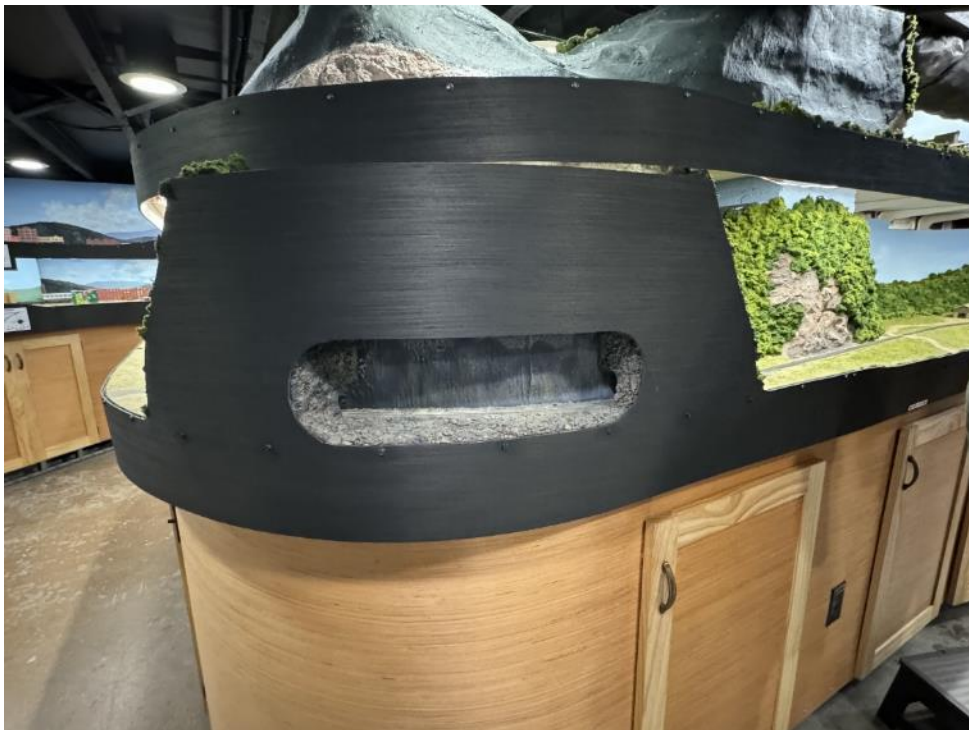






Above: Loaded coal hoppers sitting on a siding, ready to be picked up by a train, in front of miner's houses near one of the coal mines on David's B&O layout.

Below: This tunnel on David's B&O layout has an extra hole. On the side of the tunnel facing the aisle. David decided to do this in the event there was a derailment in the tunnel. As long as it is, being situated on a curve, if there was ever a derailment in there, no one would ever be able to reach in from either end to clear it, so he decided to just open it up and model the inside of the tunnel.





## THE BUECHEL DEPOT

HAS BEEN COMPLETELY REMODELED  
AND THE PROPERTY WILL FEATURE:

- A COMMUNITY GARDEN
- FARMERS MARKETS
- VENDOR MARKETS
- SHORT TERM SPACE LEASING
- A GIFT SHOP **NOW OPEN** DAILY 10 TO 7, CLOSED MONDAY
- RAILFANNING 8 TO 8 DAILY
- AND MORE TO COME

MORE INFORMATION

LOCATION – [GOOGLE MAP LINK](#)

WEBSITE – <https://atthetraindepot.com/>

FACEBOOK – [THE TRAIN DEPOT ON FACEBOOK](#)

INSTAGRAM – [THE TRAIN DEPOT ON INSTAGRAM](#)

*At The Buechel Train Depot, we are passionate about creating a vibrant, inclusive community space that honors the past while fostering future growth. Located at the historic Buechel Train Depot in Louisville, our mission is to be a dynamic place where residents can connect, grow, and thrive together.*



The



Presents



## TRAINS AT THE TREE! - Christmas Edition 2024

	11/29 – 12/01	12/06 – 12/08	12/13 – 12/15
Friday	8 AM to 8 PM	11 AM to 8 PM	11 AM to 8 PM
Saturday	11 AM to 7 PM	10 AM to 7 PM	10 AM to 7 PM
Sunday	12 PM to 5 PM	12 PM to 5 PM	11 AM to 6 PM

Members of the Southern Indiana Railroad along with local area model railroad organizations will be operating trains, answering questions, and providing information about the great hobby of model railroading.

We are Located at the East End of the Mall in the storefront next to Furniture Fair

Green Tree Mall



Green Tree Mall  
757 E Lewis and Clark Pkwy  
Clarksville, IN 47129



NATIONAL MODEL RAILROAD ASSOCIATION  
2025 National Convention

## STATION No. VI

Hosted by:  
the NORTH CENTRAL REGION

**July 14-19, 2025**



Open to ALL model railroaders! You do not have to be an NMRA member to attend! **REGISTRATION IS OPEN!!**

Our location – Sheraton Detroit-Novi, MI  
A suburban location with FREE parking!



### CONVENTION GOALS and HIGHLIGHTS -

Our main objectives are to provide events of value, items attendees will see as worth their money, all at the lowest possible cost. \*\* We will honor the traditions of past conventions but at lower cost and with greater flexibility. \*\* This convention will be shorter, starting at 1 PM on Monday and continuing through Saturday afternoon with a banquet Saturday evening. \*\* Note that registration includes all layout visits and operating sessions, and all activities at the hotel except Modeling with the Masters, and admittance to the National Train Show. \*\* We will support all the traditional activities of the SIG's. \*\* The National Contest will be fully supported. The contest will be in a prominent room and will be run by the National Contest team. There will be space for model displays, modular layouts and other functions. Those putting their models on display will have the option of entering the People's Choice Contest. \*\* We will have several prototype tours which may include a Ford plant tour and a cruise on the Detroit River with an emphasis on the industrial aspects of the waterfront. \*\* We expect to have at least 90 clinics. The clinics will be varied, and each will be given twice. \*\* We expect to have at least 60 layouts open for visit. Most layouts will be at least 900 sq. ft. in size running to over 3,000 sq. ft. in one or more cases. All layout visits and op sessions will be self-guided so you may take your time.

<https://nmra2025.com/>

**TRAINS AT THE TREE-HOW TO SIGN UP:** The following link will take you to our signup form, PLEASE click it to see what is available. **SIGNUP Here:** <https://tinyurl.com/rmjdfb8u>  
Even if slots are filled up, if you bring a train, we will do our best to try and get you a little operation time.

## Mid-Central Region Annual Convention

### BUCKEYE EXPRESS 2025

May 15- 18, 2025



Early Bird Fare: \$70.00

Full Fare: \$80.00 (After February 1, 2025)

Additional Fare-Family Member Registration: \$35.00

(Spouse, significant other, and children 16 and under with Full Fare Registrant) **click below for information**

[Home](#) [Registration](#) [Hotel](#) [Tour](#) [Ops](#) [Clinics](#) [Store](#) [Extra Fare](#) [Attractions](#)



**ROUNDHOUSE ELECTRIC TRAINS**  
**Brownsboro Road Shopping Center**  
**4870 Brownsboro Center**  
**Louisville, KY 40207**  
**(502) 895-2466**

**SUPPORT YOUR LOCAL HOBBY SHOP**  
**CLICK FOR HOURS & MORE INFORMATION**  
[Roundhouse Electric Trains](http://Roundhouse Electric Trains)



**UPSCALE HOBBIES**

123 S Indiana Ave  
 Sellersburg, IN 47172  
 (502) 882-0664

TUESDAY THRU FRIDAY 10 to 6  
 SATURDAY 10 to 5  
**SUPPORT YOUR LOCAL HOBBY SHOP**  
**CLICK FOR MORE INFORMATION**  
[UpScale Hobbies](http://UpScale Hobbies)



**SCALE REPRODUCTIONS**

Hikes Point – McMahan Plaza  
 3073 Breckenridge Lane  
 Louisville, KY 40220  
 (502) 459-5849

**SUPPORT YOUR LOCAL HOBBY SHOP**  
**CLICK FOR HOURS & MORE INFORMATION**  
[Scale Reproductions](http://Scale Reproductions)



**R & J DETAILS**

**HO Scale**

**Model Railroad Detail Parts**

**Rick Geerts - Owner**

**Shop the Online Store**

[R & J Details](http://R & J Details)



**VISIT**  
**DONATE**  
**VOLUNTEER**  
**BECOME A**  
**MEMBER**

[KENTUCKY RAILWAY MUSEUM](http://Kentucky Railway Museum)

## THE DEPOT RAILROAD MUSEUM

Part of the John Hay Center  
 206 S College Ave

Salem, IN 47167

(812) 883-1884

**CLICK FOR HOURS & MORE INFORMATION**

[The Depot Railroad Museum](http://The Depot Railroad Museum)



**OFFICERS**

Superintendent: Ron Ellison  
 Asst. Supt: Fred Soward  
 Clerk: Rick Maloney  
 Treasurer: Mike Berry

**TRUSTEES**

Stan White  
 Tom Guenthner  
 Russ Weis

**COMMITTEE CHAIRS**

Achievement Program Mark Norman  
 Contests Barry Christensen  
 Librarian Mike Berry  
 Membership Relations Stan White  
 Member Welfare Mike Berry  
 Media Ron Ellison  
 Meetings & Programs Russ Weis  
 Pie Card Bob Dawson  
 Train Show and Sale Ron Ellison  
 T-Trak Bruce DeMaeyer  
 Webmaster Fred Soward

**MID CENTRAL REGION OFFICERS**

President: Dave Neff  
 Vice-president: Jerry Doyle  
 Secretary: Bruce DeMaeyer  
 Treasurer: John Shields

To contact a Division 8 board member or committee director call or text (502) 653-5371 and tell us your needs. We'll get back to you. To contact Division 8 or any board member or committee director by email use - [division8.mcr.nmra@gmail.com](mailto:division8.mcr.nmra@gmail.com)

**THE PIE CARD**

Division 8-MCR-NMRA  
 Box 189  
 Eastwood, KY 40018-0189  
 502-653-5371

Editor: Bob Dawson  
 Asst. Editor: Fred Soward  
 Publisher: Ron Ellison

The Pie Card is published twelve times a year by Division 8 of the National Model Railroad Association, Mid Central Region.

Please address all correspondence to Bob Dawson, Editor, 7305 Ticonderoga Dr., Louisville, KY 40214, or email: [dawsobl@aol.com](mailto:dawsobl@aol.com).

Deadline for submission of articles is the 20<sup>th</sup> day of the previous month. The Pie Card goes to press by the first of each month. Photos are preferred to be a JPEG format. Documents should be submitted as a Word or similar format. No PDF's please.

**DIVISION 8 COMPANY STORE  
IS OPEN FOR BUSINESS****Available:**

Division 8 Polo Shirts, T-Shirts, Sweat Shirts, Long Sleeve Denim Shirts, Fleece Jackets, and Baseball Caps  
 For selections, prices, and order form, go to: [div8-mcr-nmra.org](http://div8-mcr-nmra.org) and click on "Company Store."



New T-Shirt

**DIVISION 8 COMPANY STORE  
IS OPEN FOR BUSINESS**

Shop anytime here - [Division 8 Company Store](http://Division8CompanyStore)  
**CLICK HERE TO ORDER** [Division 8 Mid Central Region NMRA](http://Division8MidCentralRegionNMRA) or **CALL** (502) 653-5371

Also **CLICK** or **CALL** if you have any questions. We'll get back to you right away.

You're almost OUT OF TIME to tell Santa if you'd like to find something from Division 8 under the tree. You or Santa can email or call us. We're epitome of discretion. And we're the Amazon for everything in Division 8 apparel.