

# The Pie Card

Volume 57, November 2023, Number 11

Mid Central Region, National Model Railroad Association



## FROM THE SUPERINTENDENT'S DESK

By Ron Ellison



It's November. OMG! Next month will be the Christmas Party. Don't forget to purchase a seat at the Christmas Dinner table following the link in this issue.

But let's not get ahead of ourselves. Because we have a lot to be Thankful for in November as a division and as individuals and as member of the Model Railroading Hobby. And don't forget, it's NATIONAL MODEL RAILROAD MONTH. Hey! We've got an idea! Let's put on a TRAIN SHOW & SALE and share this hobby we all love with the public. Share some love. That's what we're talkin' about.

Everyone can join us at Holy Family Parish Saffin Center on **Saturday November 11, 2023, from 10AM to 3PM.** And even better, NMRA members with NMRA membership card in hand can enter the Show at 9AM and get first pick of all the new and lightly used model trains in all scales. That's how Division 8 is saying Thank You for being a member. (You need to bring your membership card for early entry because not everyone at the Admission Tables knows you personally – but we'd sure like to, so introduce yourself entering the show and say, "I'm a NMRA member.")

Some of our members may not attend our events because they don't know anyone. We're a pretty friendly bunch. A good way to meet other members is to attend the Train Show & Sale. Wear your Division 8 badge so we know who you are. If we don't recognize you, we'll say HEY and introduce ourselves. Don't have a badge? Stop at the NMRA/Division 8 tables just inside the entrance and to the right. Ask them for a badge. We'll give you a temporary one and get one made up for you.

And later in this issue, you can click the link to buy an advance ticket and have extra money in your pocket to spend on model trains. You say, that's only \$6 – but you're planning on bringing friends you want to show model trains to and what the hobby is all about, right? PLUS, if you buy an advance ticket and bring your printed ticket to the Show, you'll have a chance to win a \$50 Roundhouse Electric Trains gift certificate. That's in addition to a HUGE selection of other door prizes if you fill out a door prize card as you enter the show.

The revenue from the Train Show & Sale is our only source of income for anything we do. An example – the Christmas Party meal ticket you should think about buying. Those tickets cost Division 8 members \$15 each. But the actual cost to Division 8 is \$43. So please attend the Train Show & Sale so we can meet expenses as well as give back to the community we all live in. We just gave the Friends of the Jeffersontown Library funds for a new TV in the meeting room. And in December, we're giving away 2 train sets again to families who may not be able afford such a luxury. Remember your first train set? Well, if you're like me, it was actually my dad's train set – but we'll cover that another time. Thank you in advance for attending the Train Show & Sale.

And Thank You for being a part of our great hobby. The best way to share your love of trains is to share it with other people. Do something to share Model Trains with others during National Model Railroad Month.

## TIME TABLE

**Nov 11**, Sat. Div 8 Train Show & Sale

**Nov 18**, Sat 2PM, Div 8 Hybrid meeting, Jeffersontown Library and Zoom.

**Dec 2**, Sat, 4:30PM, Div 8 Christmas Party

**Dec 9**, Sat, 2:00 PM, Div 8, Virtual Bull Session

**Dec 16**, Virtual Model Contest

**Dec 23**, Sat, NMRAx Quarterly Convention on YouTube & Facebook

**Jan 20**, Sat 2PM, Div 8 Hybrid meeting, Jeffersontown Library and Zoom.

**Jan 28**, Central Indiana Division Train Show, Lebanon, IN

**Feb 17**, Sat 2PM, Div 8 Hybrid meeting, Jeffersontown Library and Zoom.

**Mar 9**, Sat 2PM, Div 8 Hybrid meeting, Jeffersontown Library and Zoom.

**Mar 9**, Div 7 Flea Market & Train Show, Lakota West Freshman Campus, West Chester, OH.

**Mar 16**, Sat. Div 8 Train Show & Sale.

**Apr 13**, Sat 2PM, Div 8 Hybrid meeting, Jeffersontown Library and Zoom.

## NOVEMBER 2023 CHARLIE KEELING HYBRID MODEL CONTEST

By Barry Christensen, Contest Chairman

<b>November</b>	<b>Displays (no size limit)</b>
December	Highway vehicles
January	Freight cars
February	Non-steam motive power
March	Structures
April	Passenger cars
May	Cabooses
June	Open loads
July	NO CONTEST
August	MOW equipment
September	Photos (model) and photos (prototype)
October	Steam locomotives

For October, the 2023-2024 Charlie Keeling Hybrid Model Contest had three entries in the steam locomotives category. Everyone was a winner this time around!

There was a tie for second place between Rick Geerts for "UP 4-6-2" and Rick Maloney for "Camelback." First place went to Steve Lasher for "L&N 1954 M-1 Emma." Congratulations to each steam modeler!

The revised point totals are now: Rick Maloney with 10, Bob Frankrone with 8, Steve Lasher with 6, Rick Geerts, Mark Norman, and Russ Weis with 5 each, Kevin Jones with 2, and Darcy Elliott, Al Goodman, and Eric Waggoner with 1 each.

The November Contest is **DISPLAYS**

We will send out a reminder but below are some of the Contest timeline dates for November:

- November 4th - First day to submit entries
- November 11th - Last day to submit entries
- November 16th - Members will receive the Contest Ballot
- November 16th & 17th - Voting in the Contest Ballot ends @ 10:00 PM on the 17th
- November 18th - Winners announced at the meeting - 1st, 2nd, and 3rd
- December 2nd - First day to submit November contest entries, **HIGHWAY VEHICLES**

If you need more information, go here - <http://div8-mcr-nmra.org/site/html/contest.html> .

To enter the November Contest, email 1 to 3 photos in JPG format only along with the Contest Entry Form as a PDF file to [division8.mcr.nmra@gmail.com](mailto:division8.mcr.nmra@gmail.com) .

(Continued in column 2)



### NOVEMBER MEETING INFORMATION

The November Division 8 meeting is 2 PM **Saturday November 18**, at the Jeffersontown Library, 10635 Watterson Trail, Louisville, KY 40299. To maintain the security of the meeting, the Zoom connection information will be sent directly to members by email about a week prior to the meeting and will not be published online. Bruce DeMaeyer is presenting the program, "Why Whitefish—A Study of the Great Northern's Path to the Pacific."

### CONTEST (Continued from column 1)

Contest dates will also be listed in the Groups.io Calendar. And as always if you have questions, comments, or need help, email [division8.mcr.nmra@gmail.com](mailto:division8.mcr.nmra@gmail.com) \

We will publish the Contest timeline dates each month in *The Pie Card*.

### MEMBER WELFARE REPORT

Mike Berry Member Welfare Chairman

In October a get well card was sent to Steve Lasher, while both get well and gift cards were sent to Bonnie Lasher and Jeannie Geerts after hospital stays. Please be sure to let the Member Welfare Committee or one of the officers know of a member or their family with an illness.

### MEMBERSHIP REPORT

By Stan White Membership Chairman

As of the last report received from Mid Central Region, we have 120 active members. We have two new members, David Duncan, and Wyatt Mason. There are three renewals: Jacob Butler, Richard Maloney, Paul Sturgeon.

### OCTOBER MEETING REPORT

The October meeting was held at 2 PM on Saturday October 21, at the Jeffersontown Branch Library and virtually on Zoom. All officers with the exception of the Clerk were present either in person or on Zoom. Attendance was 30, with 21 attending in person and 9 attending virtually on Zoom.

(Continued on page 5)



Above:

**FIRST PLACE**

Steve Lasher's HO "L&N M-1 Big Emma No. 1954." Steve began with a brass Westside Model Company model of an M-1. He replaced poor castings with better newer parts. He redid the piping to better reflect prototype practice and photos of 1954. He painted the model with Rust-Oleum "self-etching primer" and Scalecoat "Locomotive Black". He lettered it using Champ Decals and weathered it with chalks fixed with Dullcote.

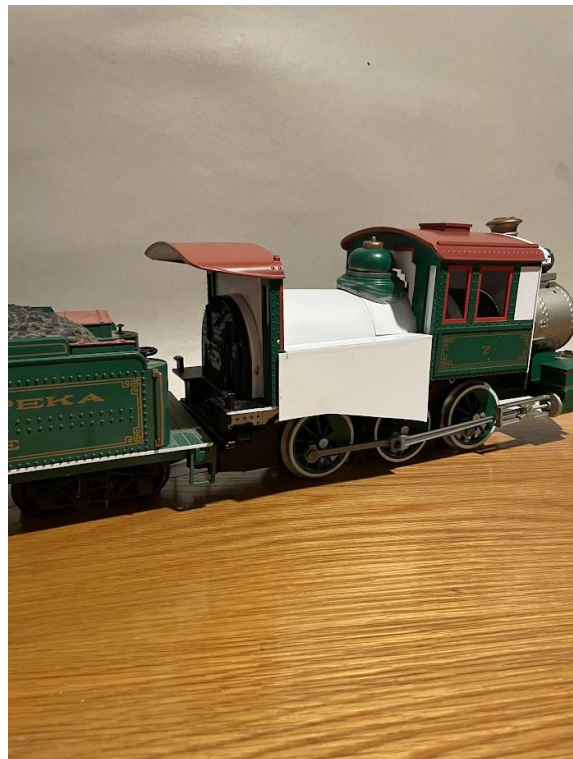
**SECOND PLACE** was a tie between Rick Geerts and Rick Maloney.

Right:

Rick Maloney's G-gauge "Camelback."

Rick said he hopes this will someday be a Camelback locomotive.

He is kit bashing this locomotive from a G-Gauge Bachman 2-6-0. He modified the boiler, cab, and side rods, and had hoped to have it completed for the contest, but he ran out of time.



*(continued on page 4)*





Left:  
The other second place winner.

Rick Geerts's HO UP 4-6-2.  
Rick weathered the engine and tender. He added Woodland Scenics coal to the tender.



Charlie Keeling Model Contest Chairman Barry Christensen presented first place certificates to the winners of the September Contest, Prototype and Model photographs.

There was a tie for first place in the Prototype Photograph category.

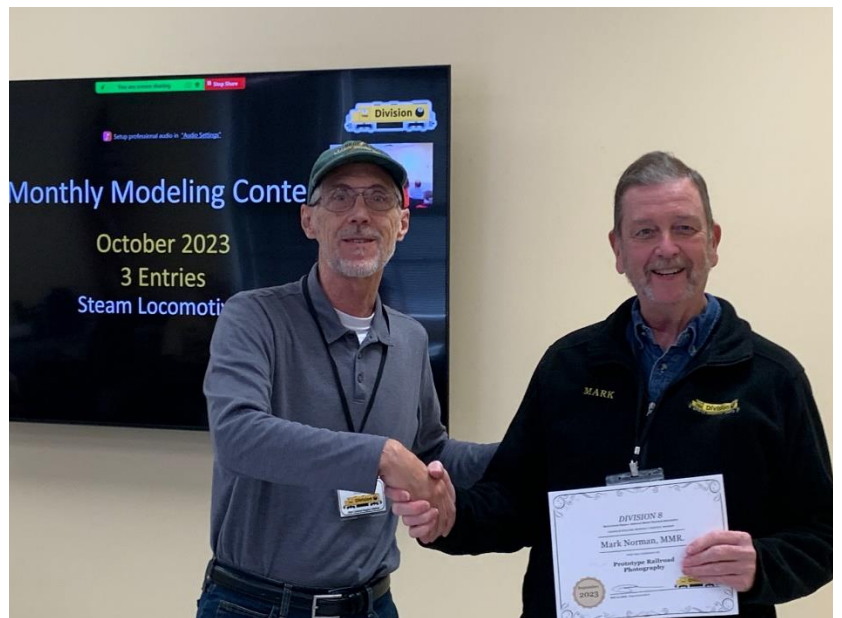
Left:  
Bob Frankrone receives his certificate for his first place winning entry in the Prototype Photos category.

*Photo by Barbara Soward*

Right:

Mark Norman receives his certificate for his first place winning entry in the Prototype Photos category.

*Photo by Barbara Soward*



**OCTOBER MEETING REPORT** *(Continued from page 2)*

New member Wyatt Mason, who attended the meeting in person, was welcomed by Superintendent Ron Ellison.

Fred Soward MMR® presented the Back to Basics Segment, “Under the Rails Part III—Model Railroad Ballast Materials.” Fred gave his presentation from Ft. Wayne, IN where he was attending the North Central Region Convention.

Programs and Meetings Chairman Russ Weis reported the scheduled presenter, Charlie Bogart, had to cancel. Russ said he will try to reschedule Charlie for a later date. In place of Charlie, Russ presented the October program, “Adding Simplified CTC.” Next month Bruce DeMaeyer will present “Why Whitefish—A Study of the Great Northern’s Path to the Pacific.”

The minutes for the October meeting are posted on the Division website. Go to the members pages. You can also view the meeting with the “Back to Basics” segment and Russ’s program on the Division 8 YouTube Channel.

**FROM THE ASSISTANT SUPERINTENDENT**

*By Fred Soward MMR®, Division 8 Assistant Superintendent*

We always thank Bob Weinheimer for hosting us when we visit his Pennsylvania Southern layout in Charleston, WV. And Bob always thanks us for bringing the layout to life! This past month, we really brought it to life by putting in nineteen and a half hours of running trains over a two-day period. Frank Trocchia from MCR Division 1 joined Ron Ellison, Bob Dawson, and me for that event. Frank was able to add enough hours as dispatcher, yardmaster, and engineer to complete his requirements for the NMRA Achievement Program Chief Dispatcher certificate. He still has paperwork to do, of course. Let me know if you want to be included in a future trip and we’ll talk about what it takes for YOU to make it happen.

Back at home, Russ Weis is continuing to run wires and more in preparation for the next operating session on his layout. I’m really excited to see how it all comes together at the Dispatcher desk becuz next time I’ll be able to see signal aspects, track occupancy, and maybe even take control of mainline turnouts. If you attended or watched the YouTube recording of the October meeting, you know what I’m talking about.

Ron Ellison, Bob Dawson, and I spent some time with Tom Guenther and his “new” layout. It’s not quite ready for a full-up operating session, but “soon” is the word. If you’ve been following Tom on Facebook, you’ll have seen that he’s put down a lot of trackwork and some scenery. By the time you read this, we will have completed all his benchwork except the lift-out bridge.

Be sure to let us know what you’re working on by either contacting me so I can put the update in a future monthly column or by sending an email to the Division 8 Groups.IO email or by writing a brief article for a future edition of The Pie Card.

**NOVEMBER 2023 MEMBER WELFARE FUND REPORT**

The primary purpose of the Member Welfare Fund is to provide Division 8 members and their immediate families with get well cards for illness and for sympathy cards and donations on behalf of Division 8 for the death of a relative as defined by the member welfare procedures.

Donations fiscal YTD: Anonymous-\$100; John Czerwinski-\$20; Kent Westphal-\$50. Thank you!

If you wish to donate, email the amount to [division8.mcr.nmra@gmail.com](mailto:division8.mcr.nmra@gmail.com) and we’ll email you an invoice to pay online. When you pay online, you’ll get an immediate receipt of your donation. Or call us at (502) 653-5371 with your donation amount and we’ll email you the invoice to pay online. Or use the invoice to send a check.

While a check may seem convenient, online payment saves a trip to the post office and the bank. We are a volunteer staff. So please help us save some of our time which is an increasingly scarce commodity. We need to spend it wisely.

Keep in mind we are a 501(c)(3) Non-profit. Your donation may be tax deductible depending on your own tax situation.

**ACHIEVEMENT PROGRAM**

*By Mark Norman MMR®, AP Chairman*

Perhaps you will allow me to continue to explore the relationship between lifespan, both quantity and quality. I recently learned of a study regarding quality of life, in particular happiness. It seems that happy people greet others 3 times as often as unhappy people. Being a social creature, this makes sense. However, how does this fit in with the AP program? Let’s look by category – Service to the Hobby. Volunteer is the most awarded certificate, followed by Author and Official. These heavily favor interaction with others. Equipment, Settings, Engineering & Operations are rarely earned in solitude. It seems we all learn from one another, share with one another, and are frequently with one another. It seems that not only is model railroading fun, it’s good for you.

**WE NEED DOOR PRIZES**

We are requesting your help in providing door prizes for our upcoming **Train Show & Sale**. The show will of course be held on Saturday, November 11th from 10am to 3pm at Holy Family Parish Saffin Center.

We are looking for any type of new or gently used model railroad-related items in their original packaging that you would be willing to donate as door prizes. Some examples of items that would be great include:

- Model trains
- Model train accessories
- Model train books
- Model train DVDs
- Model train video games

Think about selecting something from your collection that you’d like to have if your name was called. Please bring your donation to the October 21 Membership Meeting or drop off at the Door Prize Table the day of the show. Thank you for your support!

**EARLY REGISTRATION ENDS DECEMBER 31**

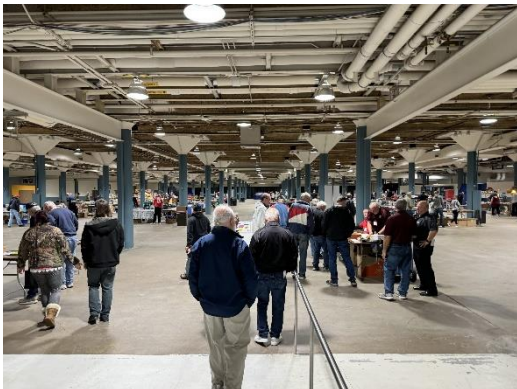


The \$90 early registration for the 2024 Mid Central Region Convention, the North Coast Limited, ends on December 31, 2024. The North Coast Limited will be held May 16-19 in Cleveland, OH. For Convention and Registration information you can go to: <http://www.div4.org>. You can also email: [buybruce@gmail.com](mailto:buybruce@gmail.com). See the convention flyer on page 9 of this issue.

**NORTH CENTRAL CONVENTION**

*By Fred Soward, MMR®*

In Mid-October, I attended the North Central Region’s annual convention in Ft Wayne, IN. I’d attended two previous NCR conventions, but this time it was in my new role as the NMRA’s Central District Director. I attended several clinics, participated in one operating session, visited seven layouts, shopped and watched trains at their local NMRA Division 3 train show, did a little bit of rail fanning along the trip, and listened to a whole lot of NCR folx tell me their thoughts about the NMRA. I had a great time and learned a lot!



Left:

The train show venue was in the convention center across the street from the convention hotel. There were 200 vendor/dealer tables and multiple operating N scale, HO scale, and G scale layouts.

*(Continued on page 7)*

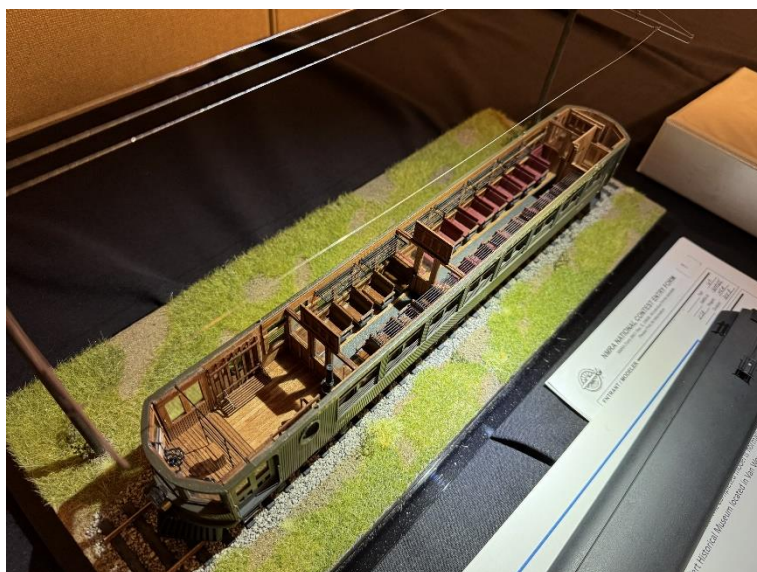
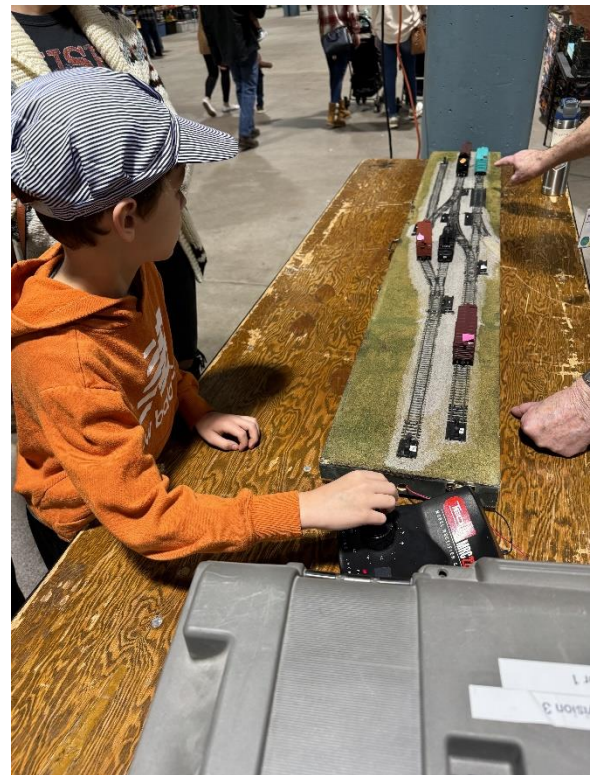


**NORTH CENTRAL CONVENTION** (Continued from page 6)



Left:  
Joe Painter’s HO scale NKP/ACY layout uses the “Rockford Checkbox Car Forwarding System” on his layout. It was new to Fred, but he found it ridiculously easy to use. It might be the solution he’s been looking for on the Santa Cruz & Felton.

Right:  
Featured during the train show was an area for 3 to 12-year olds to run an HO scale time-saver or a G gauge “Thomas” loop of track, depending on their age and interest level. A lot of smiling faces walked away from the time-savers and the Thomas layout during the show.

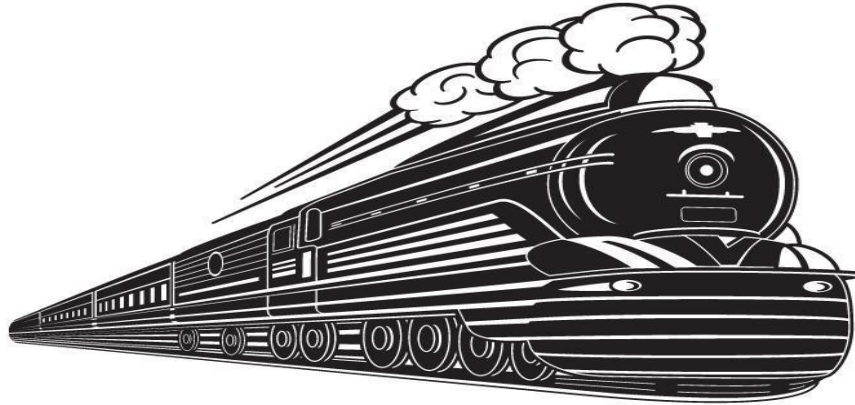


Left:  
A scratch built O scale Van Wert and Lima Interurban by Jim Marquardt, MMR. Jim’s model received a perfect score of 125.

*(Continued on page 8)*

# TRAIN SHOW & SALE

## OUR 33RD YEAR



**SATURDAY, NOVEMBER 11, 2023 10:00 AM to 3:00 PM**

**HOLY FAMILY PARISH SAFFIN CENTER**

**3938 POPLAR LEVEL RD, LOUISVILLE, KY 40213**

- MODEL TRAINS IN ALL SCALES
- OPERATING LAYOUTS AND DISPLAYS
- RETAIL SALES - OVER 100 DEALER TABLES
- MODEL RAILROAD EDUCATION
- JOIN THE NMRA - NATIONAL MODEL RAILROAD ASSOCIATION
- HOURLY DOOR PRIZES!
- GREAT FOOD & BEVERAGES
- FREE PARKING

**\$6.00 PER PERSON – CHILDREN 12 AND UNDER FREE WITH AN ADULT**

**SPONSORED BY DIVISION 8 - MID CENTRAL REGION - NMRA**

FOR MORE INFORMATION VISIT

WEBSITE: <http://div8-mcr-nmra.org>

ADVANCE TICKETS: <https://tinyurl.com/November2023TrainShowTickets>

ADVANCE TICKETS



DEALER INFORMATION



WEBSITE



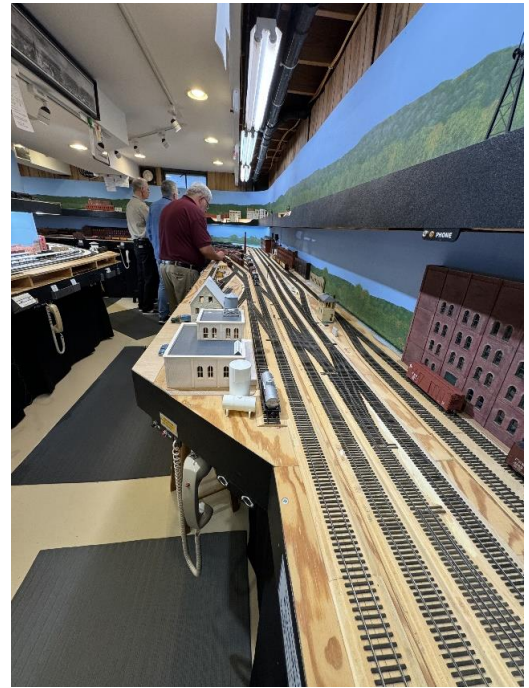


**NORTH CENTRAL CONVENTION** (Continued from page 7)



Left

Fred was the Hannah yardmaster on Joe Painter's NKP/ACY layout (see page 7). The long yard lead that went past the Witteborg tower was put to good use. Check out that low ceiling. This was one of the few places Fred could stand without bumping his head!



Right:

Alan Bell's HO scale "NYC Mohawk" layout has hand laid track and scratch built turnouts and crossovers on Obeche wood sub-roadbed that Alan milled. The layout is fully signaled and uses a dispatcher as well as four tower operators during operations.



Left:

Chuck White's multi-deck HO scale BNSF (Brand New Santa Fe) is in the early stages of construction. Almost all benchwork is completed, with less than 50% of the trackwork laid down. This photo shows just one of the two helixes on the layout. The other helix surrounds a newly-installed HVAC system.

Right:

David Powell's highly detailed HO scale D&RGW layout fills a basement bedroom. The layout's superb scenery was featured in Great Model Railroads 2020. Here's a link to a video of the layout as it appeared in the magazine: <https://www.trains.com/mrr/videos-photos/videos/layouts/layout-visits/video-ho-scale-denver-rio-grande-western/>





## 2023 Christmas Party

**Saturday December 2, 2023**

**Gather @ 4:30 ~ Buffet Dinner @ 5:30**

**\$15 per person**



**9307 New La Grange Rd  
Louisville, KY 40242**

[Corner Cafe](#)

**2023 SILVER SPIKE PRESENTATION & A BRIEF PROGRAM**

You can pay online by clicking the button, following the link, or using the QR Code

[Click to Pay](#)

<http://tinyurl.com/2023Division8ChristmasParty>





**ROUNDHOUSE ELECTRIC TRAINS**  
**Brownsboro Road Shopping Center**  
**4870 Brownsboro Center**  
**Louisville, KY 40207**  
**(502) 895-2466**  
**SUPPORT YOUR LOCAL HOBBY SHOP**  
**CLICK FOR HOURS & MORE INFORMATION**  
[Roundhouse Electric Trains](http://Roundhouse Electric Trains)



**UPSCALE HOBBIES**  
 123 S Indiana Ave  
 Sellersburg, IN 47172  
 (502) 882-0664  
 TUESDAY THRU FRIDAY 10 to 6  
 SATURDAY 10 to 5  
**SUPPORT YOUR LOCAL HOBBY SHOP**  
**CLICK FOR MORE INFORMATION**  
[UpScale Hobbies](http://UpScale Hobbies)



**SCALE REPRODUCTIONS**  
 Hikes Point – McMahan Plaza  
 3073 Breckenridge Lane  
 Louisville, KY 40220  
 (502) 459-5849  
**SUPPORT YOUR LOCAL HOBBY SHOP**  
**CLICK FOR HOURS & MORE INFORMATION**  
[Scale Reproductions](http://Scale Reproductions)

The Mid-Central  
 Regional Convention  
 May 16-19 2024  
 Cleveland, Ohio



Early Registration is \$90.00  
 through 12/31/2023



[www.northcoastlimited2024.org](http://www.northcoastlimited2024.org)

*Convention Merchandise*

*The North Coast Limited 2024 Convention offers two  
 Convention Cars and a Large selection of Men & Women's  
 apparel*

*SCHEDULE of EVENTS*

*Layout Tours, Operating Sessions, 4 Clinic Rooms  
 (including make & take clinics for a small fee)*

*Celebration of Modeling, Yard Sale, Prototype Tours, General interest Tours,  
 Non-Rail Tours*

*More events are being added as the NCL moves closer to the convention date.  
 Look for updates on the NCL site!*



*Many Restaurants  
 are located  
 within walking  
 distance of the  
 Crowne Plaza  
 Hotel.*

**Crowne Plaza Hotel**

7230 Engle Rd, Middleburg Heights, OH, 44130  
 (855)797-6733

[www.northcoastlimited2024.org](http://www.northcoastlimited2024.org)



**EARLY REGISTRATION  
 and MERCHANDISE PRESALE  
 IS NOW OPEN!**

*Register or print out  
 a registration form  
 online!*

**R & J DETAILS**  
**HO Scale**  
**Model Railroad Detail Parts**

**Rick Geerts - Owner**

**Shop the Online Store**

[R & J Details](http://R & J Details)

**THE DEPOT RAILROAD  
 MUSEUM**

**Part of the John Hay Center**  
**206 S College Ave**

**Salem, IN 47167**

**(812) 883-1884**

**CLICK FOR HOURS & MORE INFORMATION**

[The Depot Railroad Museum](http://The Depot Railroad Museum)



**OFFICERS**

Superintendent:	Ron Ellison
Asst. Supt:	Fred Soward
Clerk:	Bob Dawson
Treasurer:	Mike Berry

**TRUSTEES**

Stan White  
Tom Guenther  
Russ Weis

**COMMITTEE DIRECTORS**

Achievement Program	Mark Norman
Contests	Barry Christensen
Librarian	Mike Berry
Membership	Stan White
Member Welfare	Mike Berry
Media	Ron Ellison
Meetings & Programs	Russ Weis
Pie Card	Bob Dawson
Train Show and Sale	Ron Ellison
T-Trak	Bruce DeMaeyer
Webmaster	Fred Soward

**MID CENTRAL REGION OFFICERS**

President:	Dave Neff
Vice-president:	Jerry Doyle
Secretary:	Bruce DeMaeyer
Treasurer:	John Shields

To contact a Division 8 board member or committee director call or text (502) 653-5371 and tell us your needs. We'll get back to you. To contact Division 8 or any board member or committee director by email use - [division8.mcr.nmra@gmail.com](mailto:division8.mcr.nmra@gmail.com)

**THE PIE CARD**

Division 8-MCR-NMRA  
Box 189  
Eastwood, KY 40018-0189  
502-653-5371

Editor: Bob Dawson  
Asst. Editor: Rick Tipton  
Publisher: Ron Ellison

The Pie Card is published twelve times a year by Division 8 of the National Model Railroad Association, Mid Central Region.

Please address all correspondence to Bob Dawson, Editor, 7305 Ticonderoga Dr., Louisville, KY 40214, or email: [dawsobl@aol.com](mailto:dawsobl@aol.com).

Deadline for submission of articles is the 20<sup>th</sup> day of the previous month. The Pie Card goes to press by the first of each month. Photos are preferred to be a JPEG format. Documents should be submitted as a Word or similar format. No PDF's please.

**DIVISION 8 COMPANY STORE IS OPEN FOR BUSINESS**



**Available:**

Division 8 Polo Shirts, T-Shirts, Sweat Shirts, Long Sleeve Denim Shirts, Fleece Jackets, and Baseball Caps  
For selections, prices, and order form, go to: [div8-mcr-nmra.org](http://div8-mcr-nmra.org) and click on "Company Store."



New T-Shirt

**DIVISION 8 COMPANY STORE IS OPEN FOR BUSINESS**

Start a conversation about Model Railroading. It's EASY when you wear your Division 8 apparel. Need some? It's in the Company Store. Shop anytime here - [Division 8 Company Store](#)

**CLICK [Division 8 Mid Central Region NMRA](#) or CALL (502) 653-5371 TO ORDER.**

Santa will soon be on his way. Time to think about adding Division 8 apparel to your list. If a family member needs help placing a gift order, have them call us. We'll confirm the order and email an itemized estimate. When the order is ready, we'll invoice you, or an interested 3rd party, and then pay online with a credit card. We will ship your order at the least expensive rate. Or if you don't need your item(s) in a hurry, pick them up at the next meeting and save postage. If you have any questions, click or call. We'll get back to you right away.